



Windows Outlook Express XP Email Configuration

Mail Server Settings

SMTP Outgoing Mail Server: smtp.teleguam.net

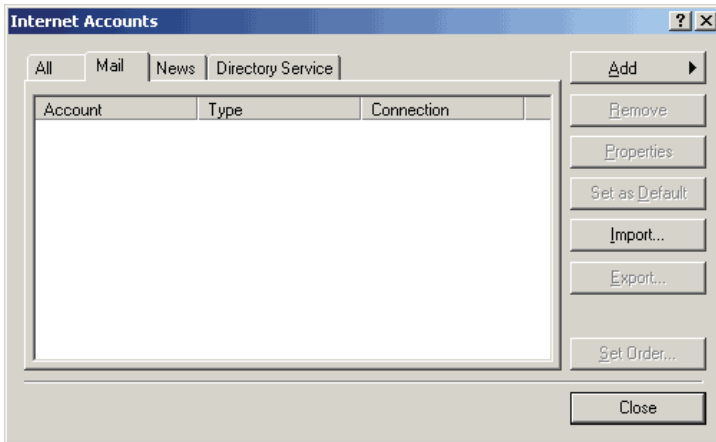
POP Incoming Mail Server: pop.teleguam.net

Step 1: Load Outlook Express

Step 2: Select Accounts from the Tools menu

Step 3: Click the Add Button

Step 4: Select Mail from the drop-down menu.



Step 5: Enter your name in the Display Name field.

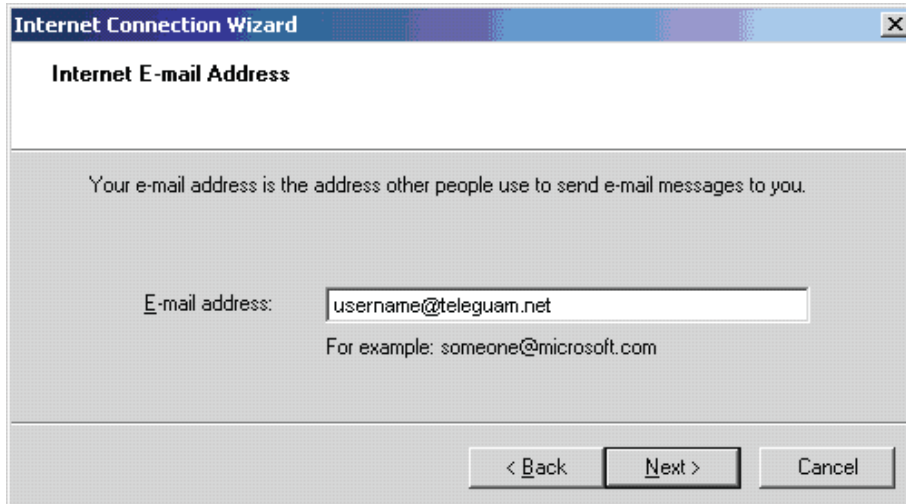
Step 6: Click the Next button.





Step 7: Enter your Email Address.

Step 8: Click the Next button.

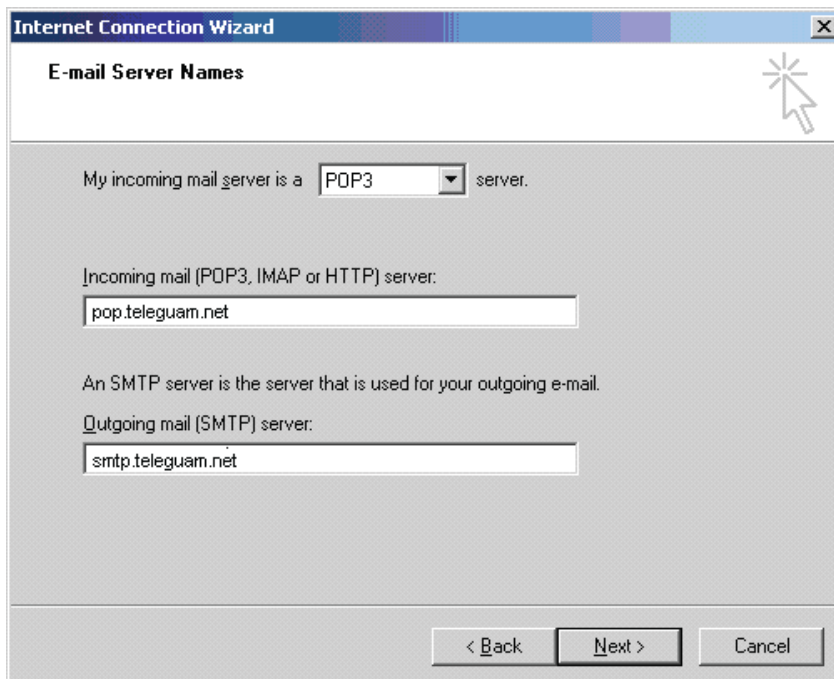


Step 9: Select POP3 from the drop down menu.

Step 10: Fill in the Incoming mail (POP3) server field with pop.teleguam.net

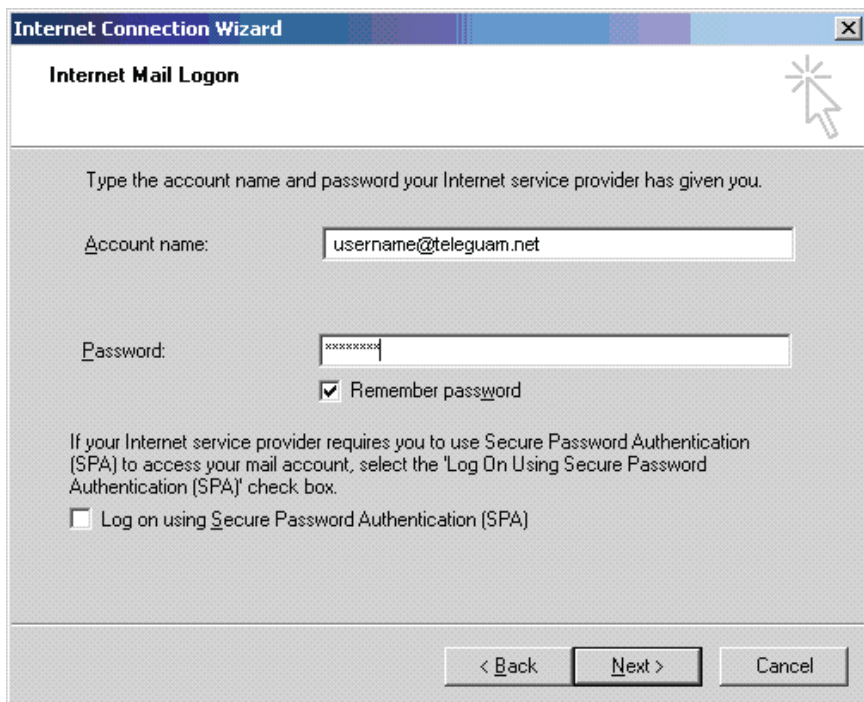
Step 11: Fill in the Outgoing mail (SMTP) server field with smtp.teleguam.net

Step 12: Click the Next button



Step 13: In the Account name field, enter your Email Address.

Step 14: Enter your password into the Password field, then click Next.

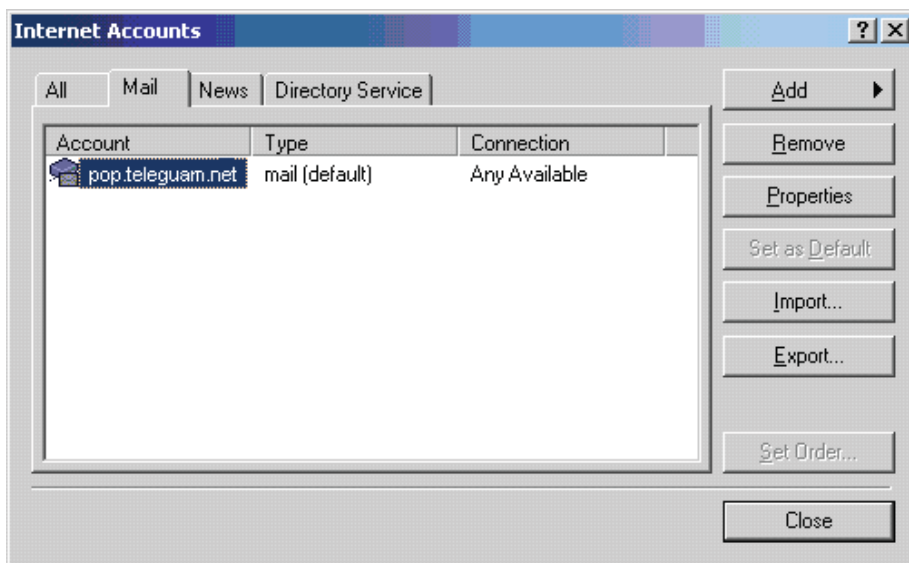


The dialog box is titled "Internet Connection Wizard" and "Internet Mail Logon". It contains the following fields and options:

- Account name:
- Password:
- Remember password
- Log on using Secure Password Authentication (SPA)

Buttons at the bottom: < Back, Next >, Cancel.

Step 15: Click the Finish button, then click OK



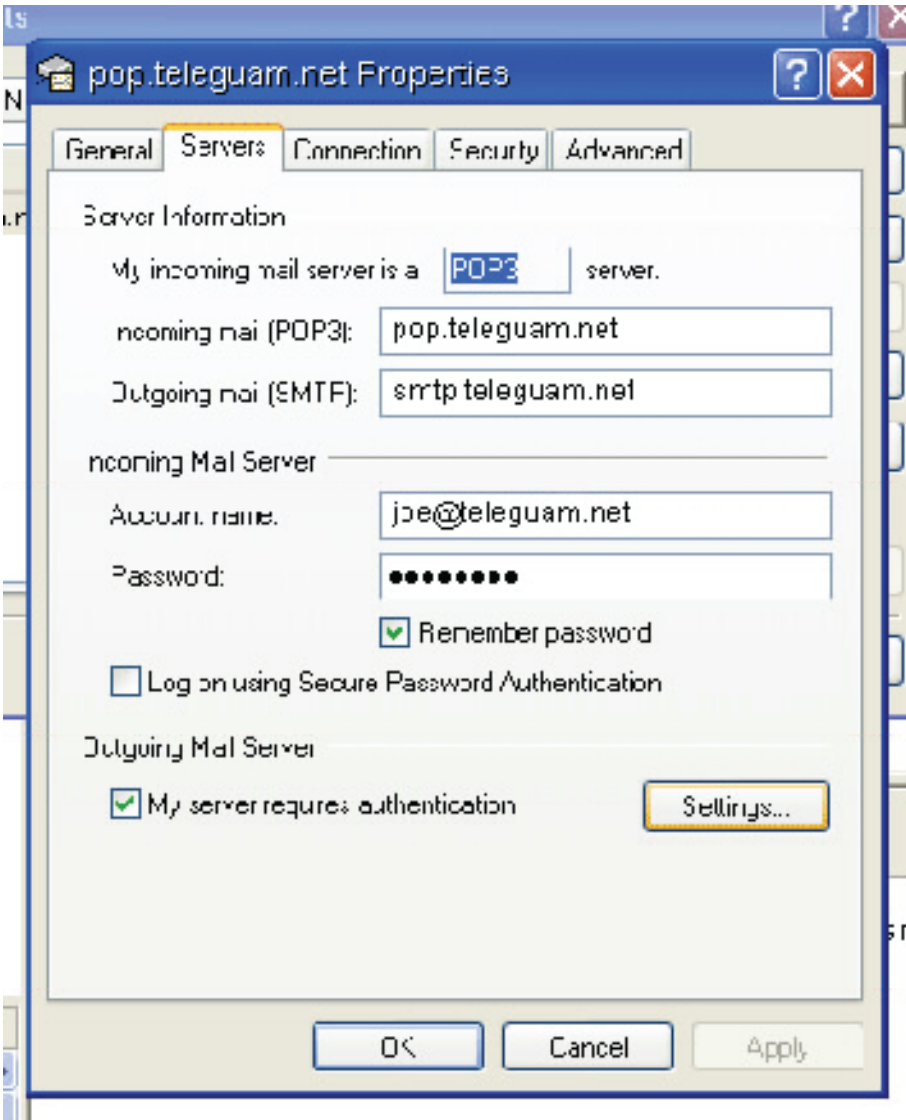
The dialog box is titled "Internet Accounts" and shows a list of accounts:

Account	Type	Connection
pop.teleguam.net	mail (default)	Any Available

Buttons on the right: Add, Remove, Properties, Set as Default, Import..., Export..., Set Order..., Close.

Step 16: Click the Properties button

Step 17: When the Properties tab appears, make sure the Servers tab is selected. Ensure that the Outgoing Mail Server is set to the correct mail server (smtp.teleguam.net). Select the box at the bottom of the dialog box labeled My server requires authentication, then hit the button next to it labeled Settings.



Step 18: Select the option labeled Log on using, then in the Account Name: field; enter the full email address of the user in question. Put the account password in the Password field, check Remember password then click OK. Hit Apply, and then click OK to apply the settings.



Step 19: Click the Close button