



Windows Outlook Express 5.0  
Email Configuration

Mail Server Settings

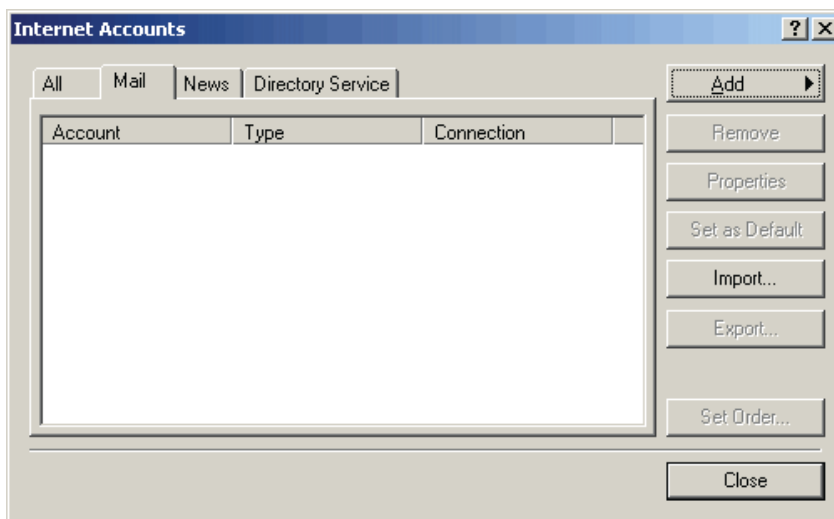
SMTP Outgoing Mail Server: smtp.teleguam.net  
POP Incoming Mail Server: pop.teleguam.net

Step 1: Load Outlook Express

Step 2: Select Accounts from the Tools menu

Step 3: Click the Add Button

Step 4: Select Mail from the drop-down menu.



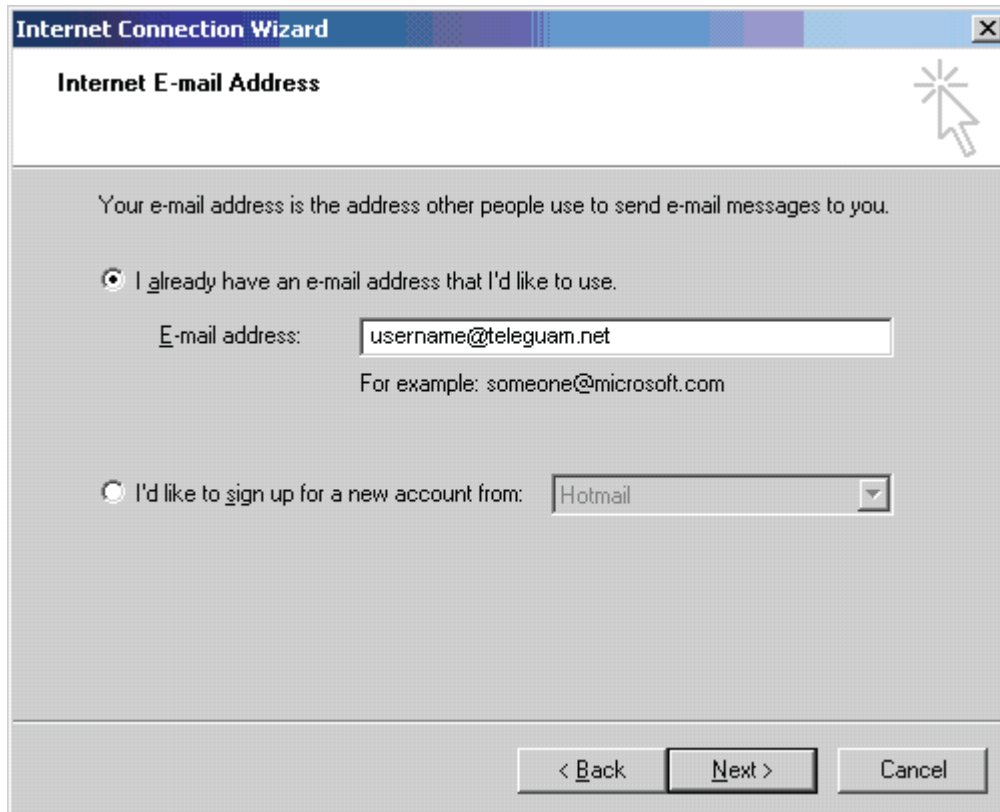
Step 5: Enter your name in the Display Name field.

Step 6: Click the Next button.



Step 7: Enter your Email Address. (Be sure you use your username@teleguam.net )

Step 8: Click the Next button.



The screenshot shows the 'Internet Connection Wizard' dialog box, specifically the 'Internet E-mail Address' step. The window title is 'Internet Connection Wizard' and the subtitle is 'Internet E-mail Address'. The main text reads: 'Your e-mail address is the address other people use to send e-mail messages to you.' There are two radio button options: the first is selected and reads 'I already have an e-mail address that I'd like to use.' Below this is a text input field containing 'username@teleguam.net' and a note 'For example: someone@microsoft.com'. The second option is 'I'd like to sign up for a new account from:' followed by a dropdown menu currently set to 'Hotmail'. At the bottom, there are three buttons: '< Back', 'Next >', and 'Cancel'.



Windows Outlook Express 5.0  
Email Configuration

Step 9: Select POP3 from the drop down menu.

Step 10: Fill in the Incoming mail (POP3) server field with pop.teleguam.net

Step 11: Fill in the Outgoing mail (SMTP) server field with smtp.teleguam.net

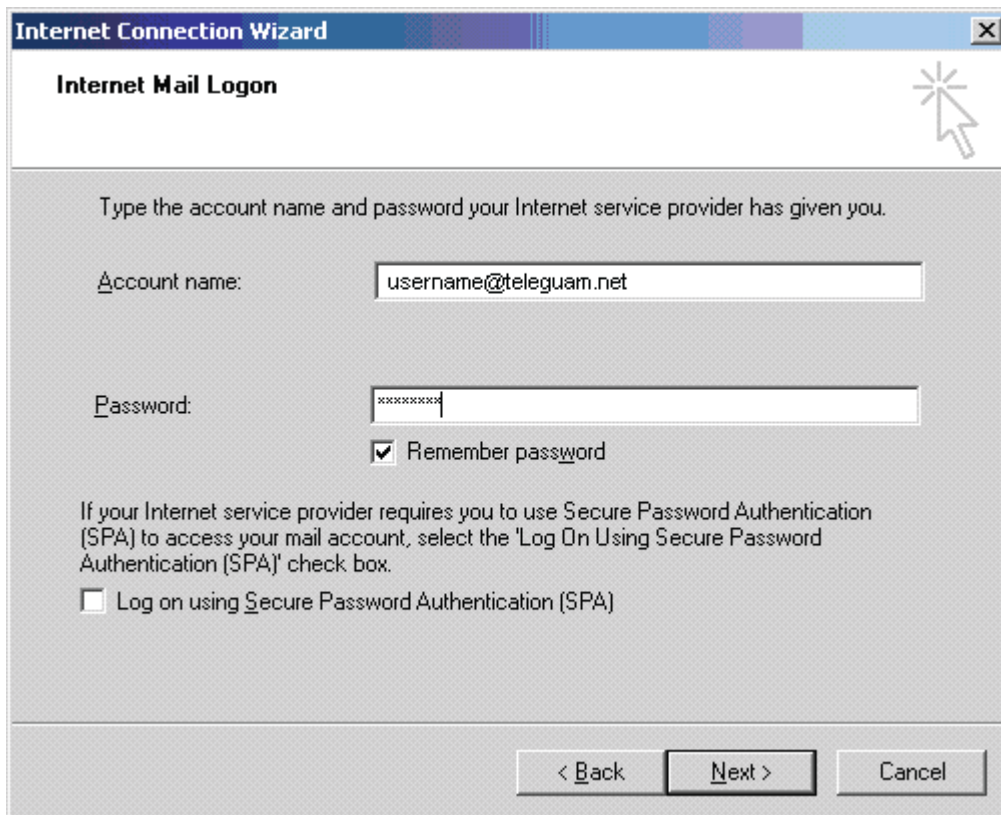
Step 12: Click the Next button

A screenshot of the "Internet Connection Wizard" dialog box, specifically the "E-mail Server Names" step. The window title bar reads "Internet Connection Wizard" and "E-mail Server Names". The main content area shows: "My incoming mail server is a  server." Below this, it asks for the "Incoming mail (POP3, IMAP or HTTP) server:" with a text box containing "pop.teleguam.net". It then asks for the "Outgoing mail (SMTP) server:" with a text box containing "smtp.teleguam.net". At the bottom, there are three buttons: "< Back", "Next >", and "Cancel". A mouse cursor is visible over the "Next >" button.

Step 13: In the Account name field, enter your Email Address.

Step 14: Enter your password into the Password field

Step 15: Click the Next button



**Internet Connection Wizard**

**Internet Mail Logon**

Type the account name and password your Internet service provider has given you.

Account name:

Password:

Remember password

If your Internet service provider requires you to use Secure Password Authentication (SPA) to access your mail account, select the 'Log On Using Secure Password Authentication (SPA)' check box.

Log on using Secure Password Authentication (SPA)

< Back   Next >   Cancel

Step 16: Click the Finish button

