

Step 1: Click on Start and click on the Control Panel.

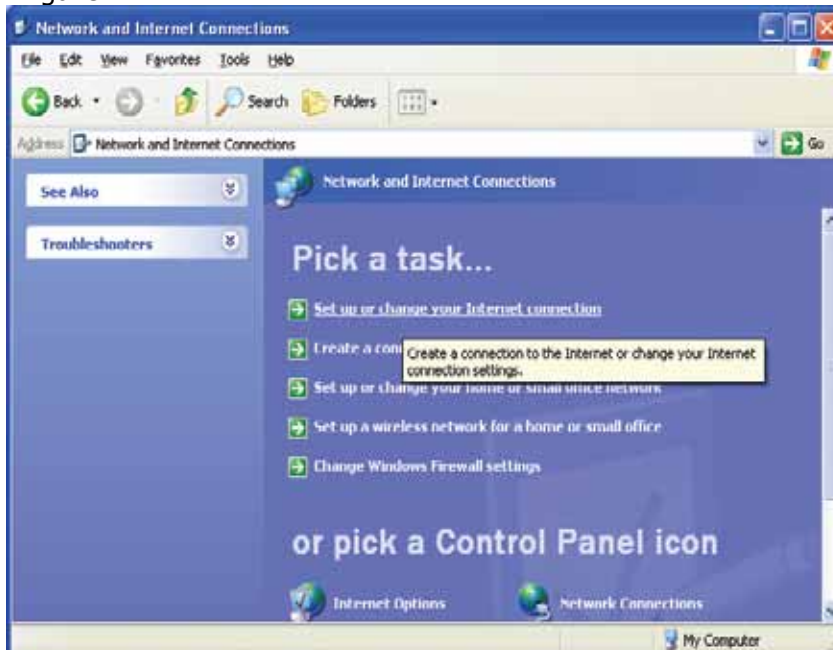
Step 2: Click on "Network and Internet Connections" shown in Figure1.

Figure1



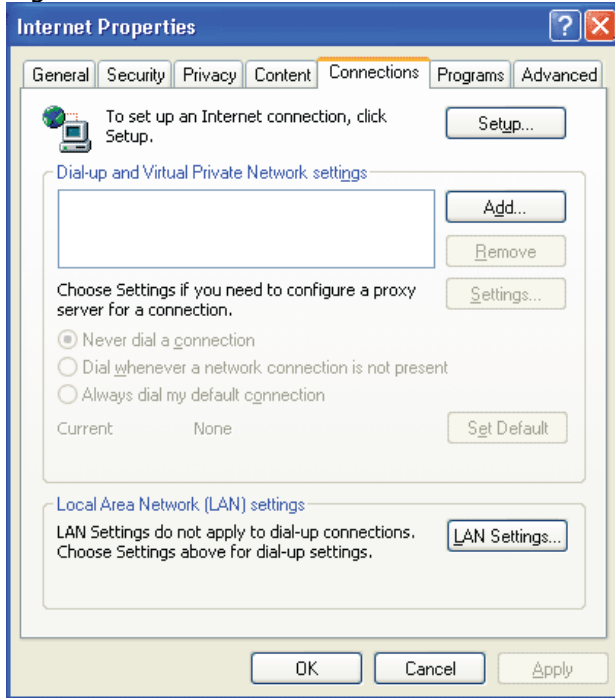
Step 3: Click on "Set up or change your Internet connection" shown in Figure 2.

Figure 2



Step 4: Click on Setup shown in Figure 3.

Figure 3



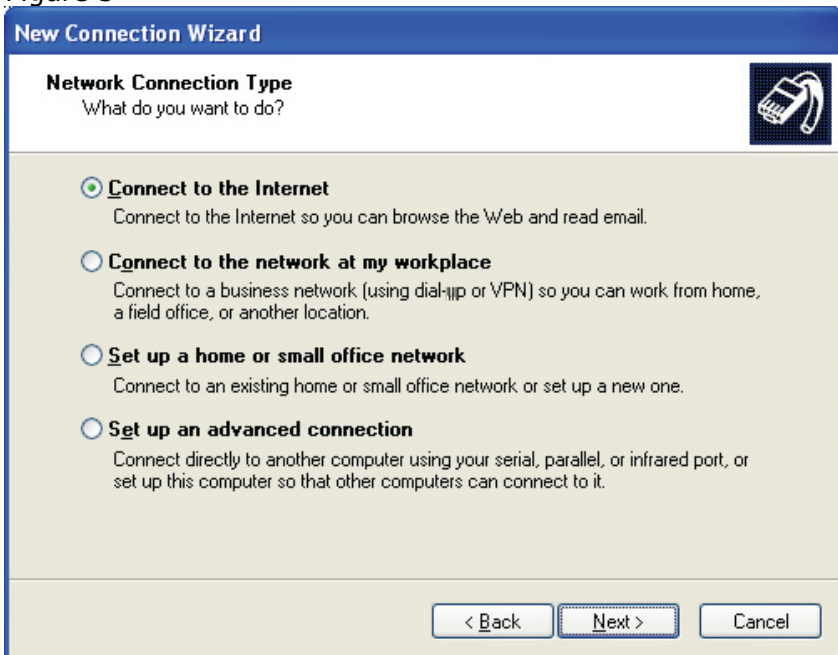
Step 5: Click Next shown in Figure 4.

Figure 4



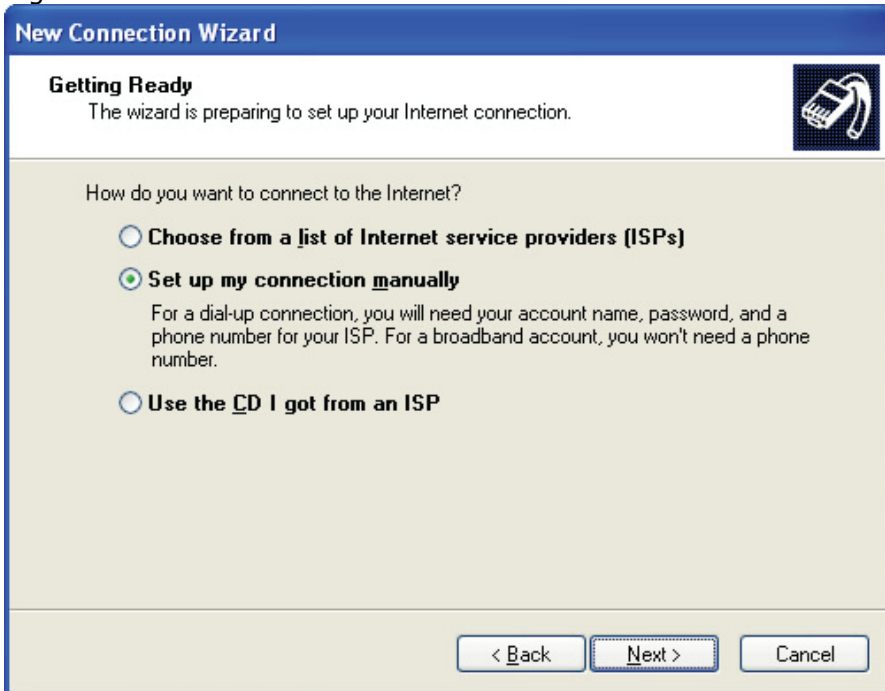
Step 6: Shown in Figure 5, click on "Connect to the Internet" then click Next.

Figure 5



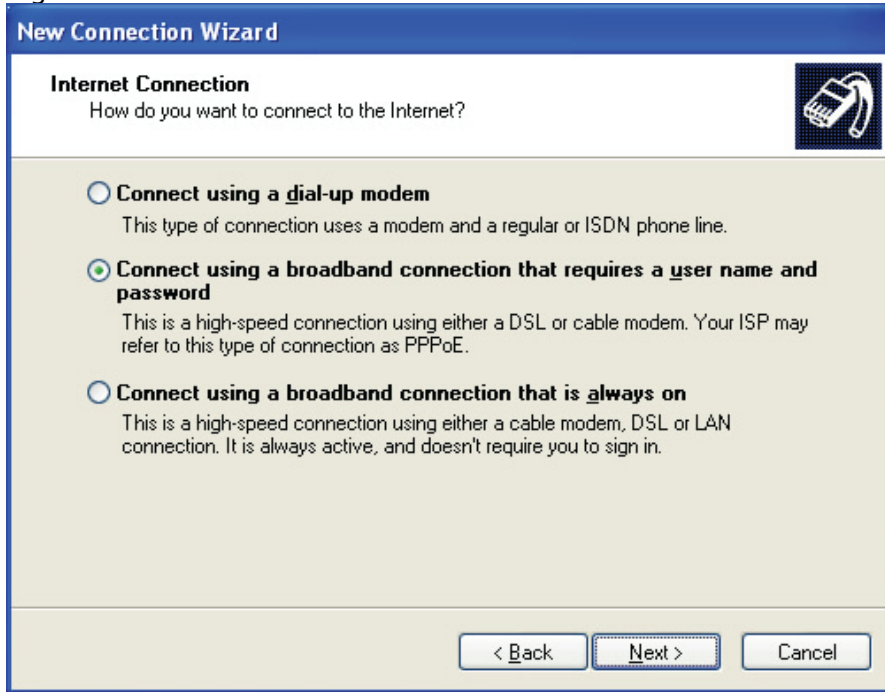
Step 7: Shown in Figure 6, click on "Set up my connection manually" then click Next.

Figure 6



Step 8: Shown in Figure 7, click on "Connect using a broadband connection that requires a user name and password" then click Next.

Figure 7



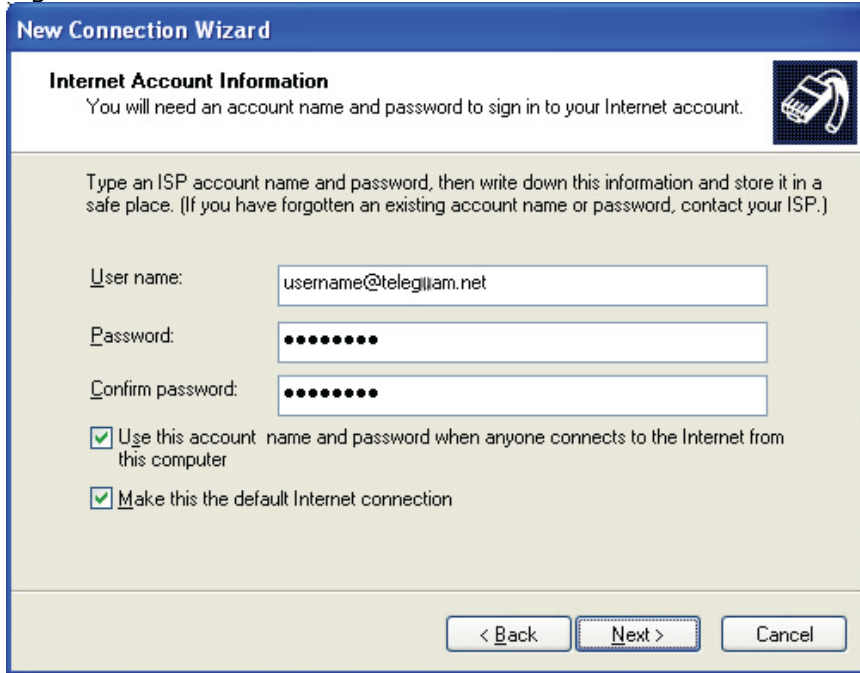
Step 9: Shown in Figure 8, type in TELEGUAM.NET and click Next.

Figure 8



Step 10: Shown in Figure 9, type in your username (ie:abc@teleguam.net) and password then click Next.

Figure 9



Step 11: Shown in Figure 10, click on "Add a shortcut to this connection to my desktop" and click Finish.

Figure 10

