

## NETGEAR DM111P MODEM SETUP GUIDE

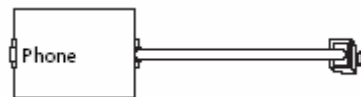
### ADSL Modem Setup

There are four steps to setting up the ADSL modem:

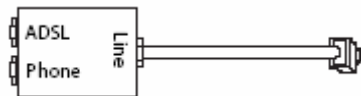
1. Install ADSL filters on the phone lines (Applies to installations without a splitter/filter already in the NID).
2. Connect the ADSL modem to the ADSL line.
3. Log in to the ADSL modem.
4. Connect to the Internet.

Follow the steps below to connect the modem to your network.

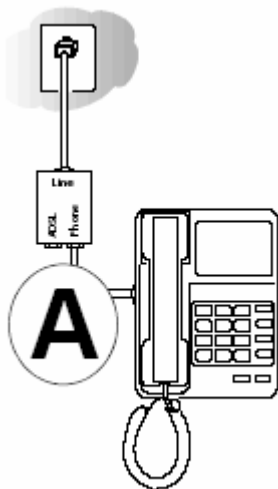
1. Connect the ADSL filter.
  - a. You need to install an ADSL filter for every telephone that uses the same phone line as your ADSL modem.
    - 1) Single-Line Filter: Use with a phone or a fax machine. (Optional purchase accessory)



- 2) Two-Line Filter with Splitter: Use to share an outlet with a phone and the ADSL modem (included with DM111P modem).

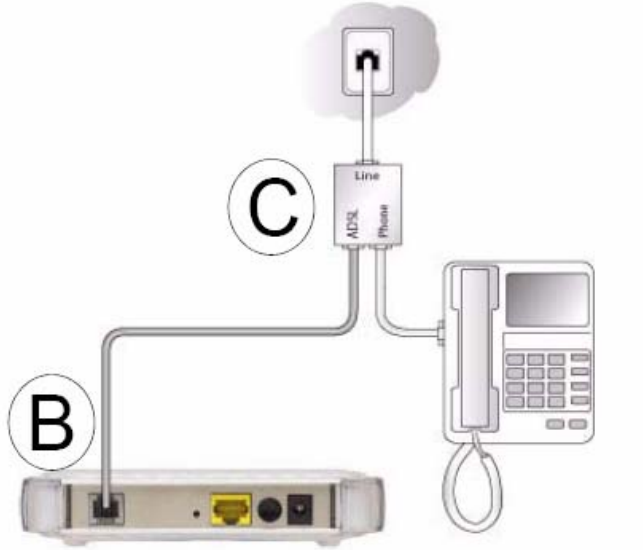


- b. Two-Line Filter Example. Insert the two-line filter into the phone outlet and connect the phone to the phone line connector (**A**):



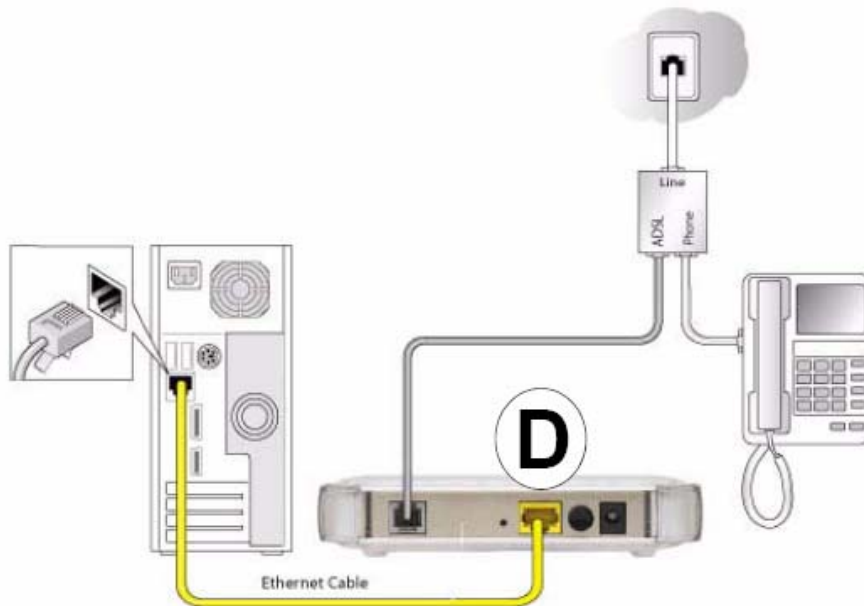
2. Connect the ADSL modem to the ADSL filter.

a. Using the included phone cable with RJ-11 jacks, connect the ADSL port (B) of the ADSL modem to the ADSL port (C) of the included two-line filter.



**Warning:** Improperly connecting a filter to your ADSL modem will block your ADSL connection.

b. Connect the Ethernet cable from the ADSL modem LAN port (D) to the Ethernet adapter in your computer or router.



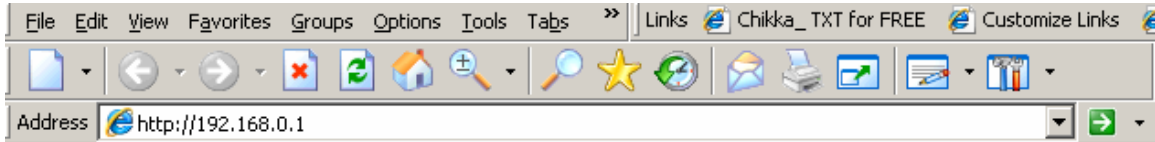
- c. Connect the power adapter to the ADSL modem and plug it in to a power outlet.
- d. Now, turn on your router or computer. Verify the following:



- 1 The power light is lit after turning on the ADSL modem.
  - 2 The Ethernet is on.
  - 3 The ADSL light is solid green, indicating you are connected to the ADSL network.
3. If connected directly to a router, refer to your router documentation for configuring ADSL service with an ISP requiring "PPPoE" authentication. After, test Internet connectivity on your computer network.
  4. If connected directly to a computer, please continue on to the "ADSL Modem GUI Setup" procedure.

### ADSL Modem GUI Setup (NETGEAR DM111P)

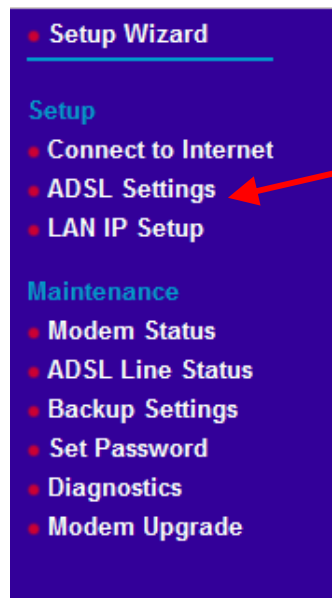
1. Open Internet Explorer and type <http://192.168.0.1> in the address bar.



2. Log in to modem. Username: admin Password: password



3. Click on "ADSL Settings" in the left-hand menu.



4. Change the VPI setting to 0 in the ADSL Settings frame.

**ADSL Settings**

Please enter VPI and VCI numbers and correct protocol for the Internet connection which is provided by your ISP.

VPI:

VCI:

Protocol:

Multiplexing Method:

PPP User Name:

PPP Password:

MTU Size (in bytes):

**ADSL S**

The default system use

- VPI/
- Pro
- PPP
- PPP

Apply and

Click Apply

Click Canc

5. Change the Protocol drop-down menu to 'RFC2684 Bridging' and click 'Apply'

**ADSL Settings**

Please enter VPI and VCI numbers and correct protocol for the Internet connection which is provided by your ISP.

VPI:

VCI:

Protocol:

Multiplexing Method:

**ADSL S**

The default system use

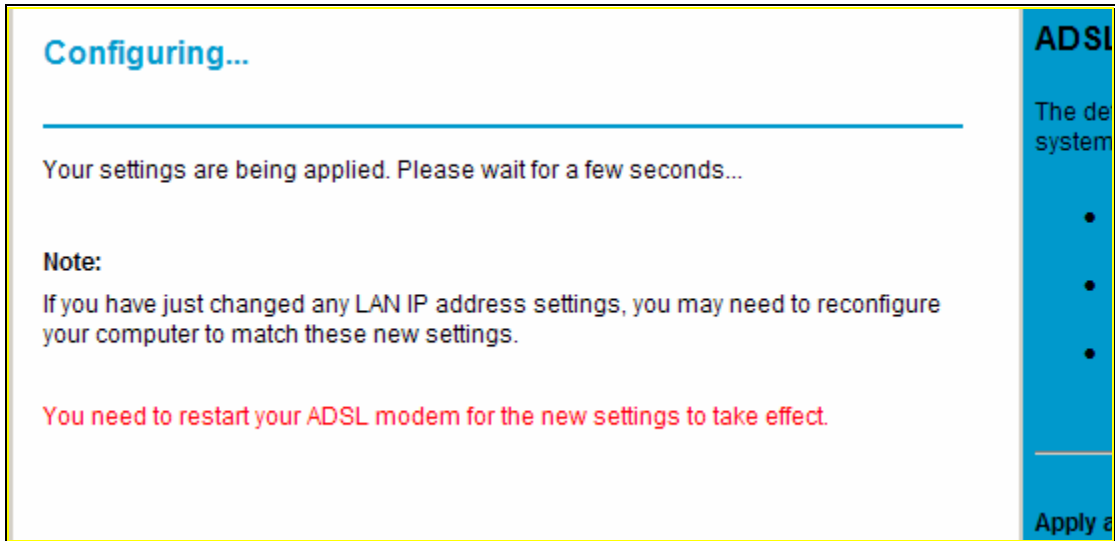
- VPI/
- Pro
- PPP
- PPP

Apply and C

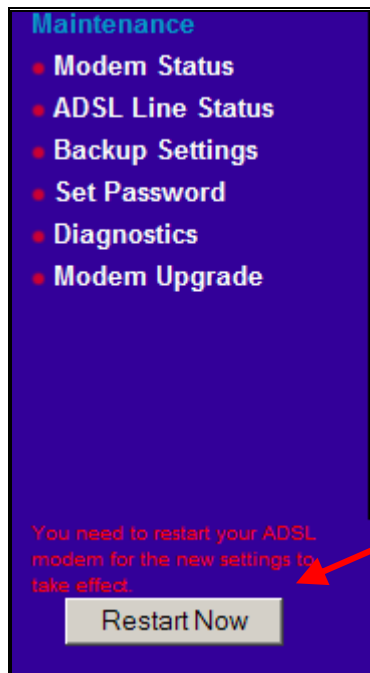
Click Apply


Click Canc

6. After clicking “Apply”, you should see the following message:

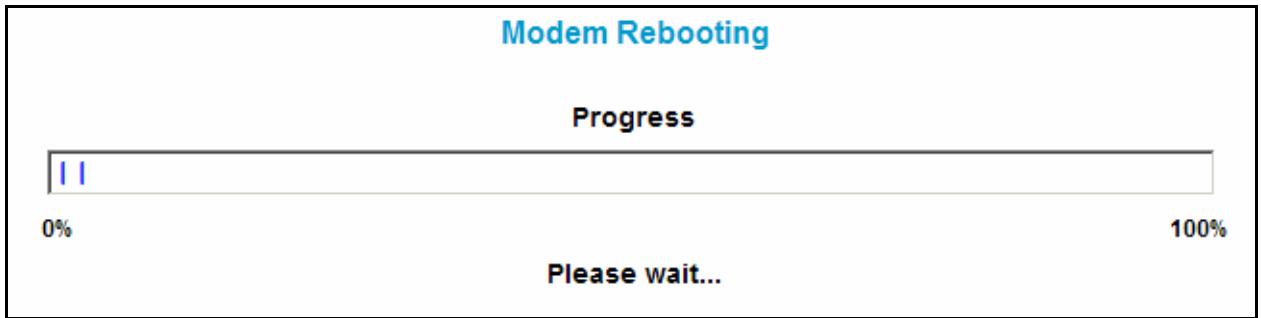


7. In the lower left-hand corner, a “Restart Now” button will appear. Click the “Restart Now” Button.

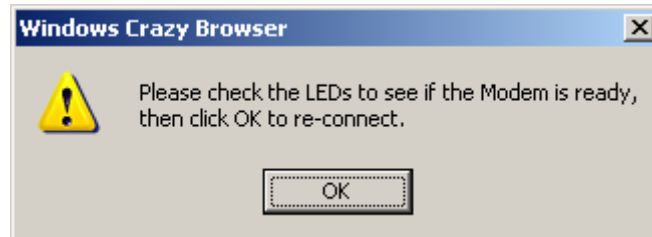


	<b>Note:</b> Under “Set Password”, it is recommended to change the default password. Store the password in a safe place for later retrieval.
---	--

8. The following indicator will appear:




9. After the modem has completed rebooting, click on the "OK" button.



10. Your modem is now set to connect to the internet. The local area connection on some Windows computers may show "Limited or No Connectivity" or may show the following Icon. In most cases, this is normal and will not affect your ability to connect to Spyder DSL.



11. After completing the above modem setup, you should follow the connection setup guide specific to your computer (i.e. Windows XP, Mac OS X, etc). If you did not receive a connection setup guide, please feel free to call us at 644-4GTA and one of our call center representatives will be able to assist you with setting up. You can also visit us at our Tumon Business Office and pick up a copy from any of our Customer Service Representatives. As an alternative, the connection setup guides are also available on the Internet at <http://www.teleguam.net>. If you should experience any problems setting up your internet connection, please feel free to call us anytime at 644-4GTA.

	<b>Note:</b> If modem was reset back to the factory default settings, this procedure would again need to be followed.
---	---

## LED/Interface Reference

### The Front Panel

The ADSL modem front panel shown below contains status LEDs.



You can use the LEDs to verify various conditions. Table 1-1 describes each LED.

**Table 1-1. LED Descriptions**

Label	Activity	Description
1. Power	On Off	Power is supplied to the modem. Power is not supplied to the modem.
2. Ethernet	On (Green) Blink (Green) On (Amber) Blink (Amber) Off	The Local port has detected a link with a 100Mbps device. Data is being transmitted or received at 100Mbps. The Local port has detected a link with a 10Mbps device. Data is being transmitted or received at 10Mbps. No link is detected on this port.
3. ADSL	Blink(Green) On Off	The ADSL is initializing. The ADSL is ready and running. No ADSL service is detected.
4. Internet	Off	Internet Data service is ready.

### The Rear Panel

The rear panel of the ADSL modem contains port connections.



Viewed from left to right, the rear panel contains the following elements:

1. RJ-11 ADSL port for connecting the router to an ADSL line
2. Factory Default Reset push button
3. Local Ethernet RJ-45 LAN port for connecting the local computer
4. Power switch
5. AC power adaptor outlet



**Note:** NETGEAR provides direct 24x7 technical phone support at 1-888-638-4327