

**Mail Server Settings**

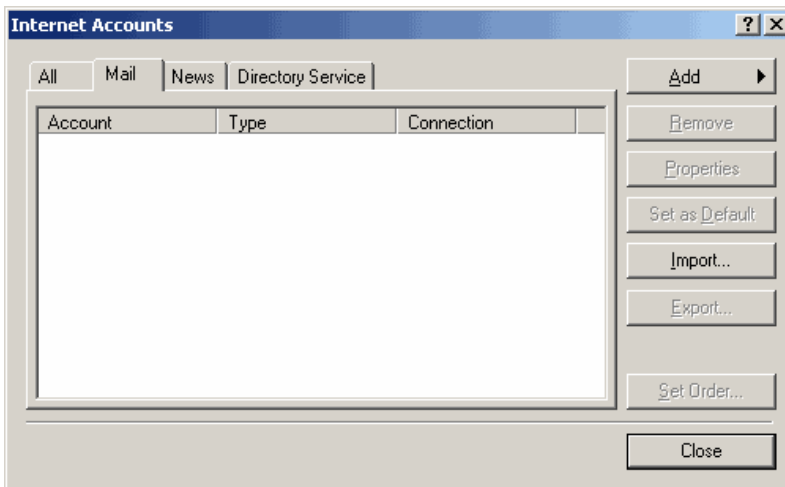
**SMTP Outgoing Mail Server: smtp.teleguam.net**  
**POP Incoming Mail Server: pop.teleguam.net**

Step 1: Load Outlook Express

Step 2: Select Accounts from the Tools menu

Step 3: Click the Add Button

Step 4: Select Mail from the drop-down menu.



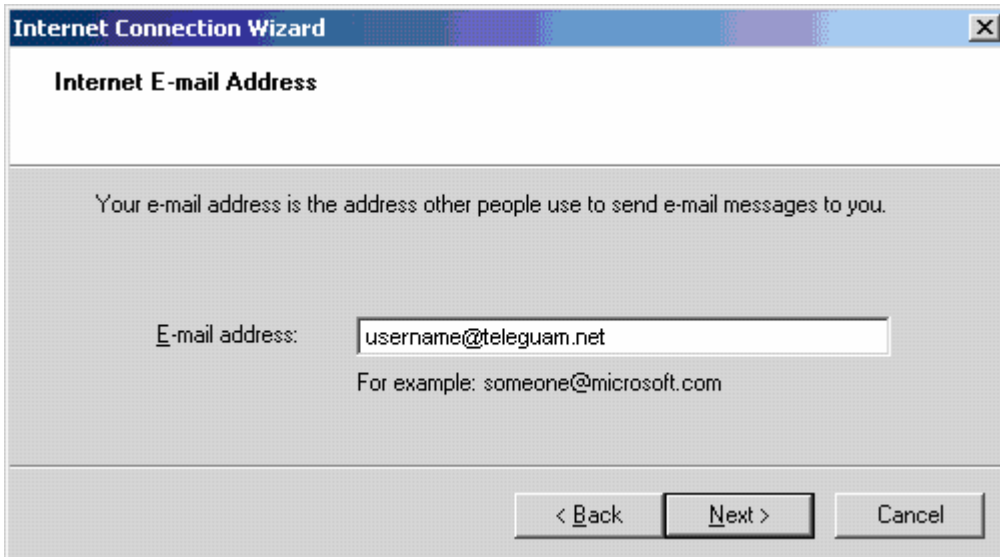
Step 5: Enter your name in the Display Name field.

Step 6: Click the Next button.



Step 7: Enter your Email Address.

Step 8: Click the Next button.

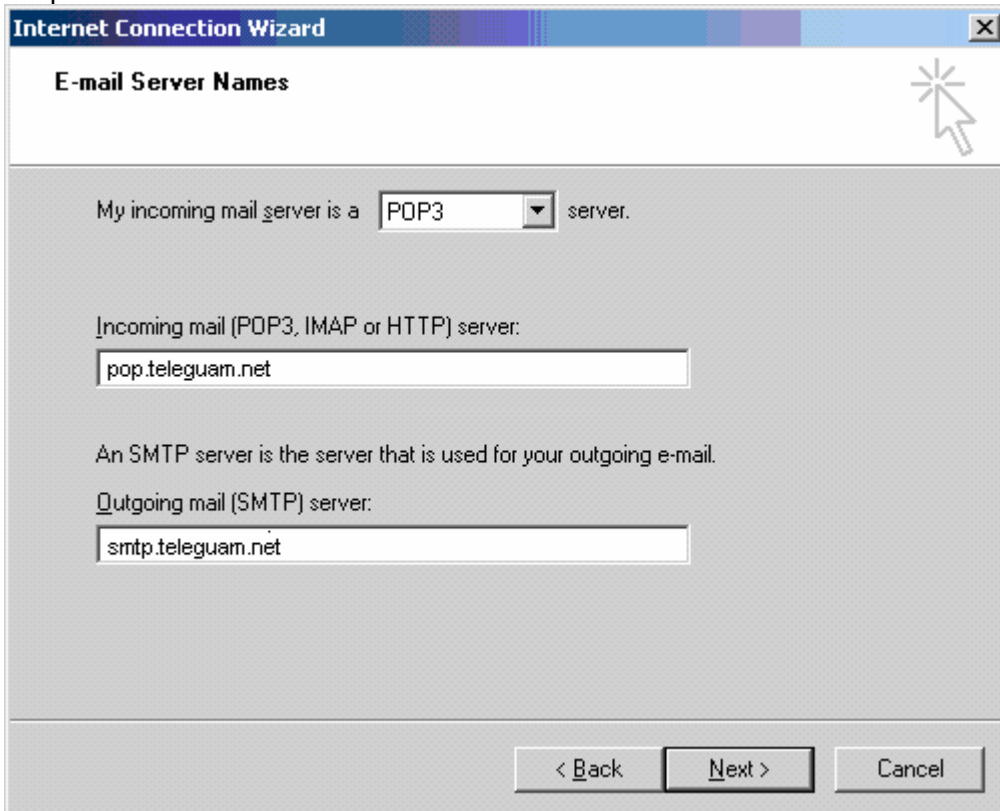


Step 9: Select POP3 from the drop down menu.

Step 10: Fill in the Incoming mail (POP3) server field with pop.teleguam.net

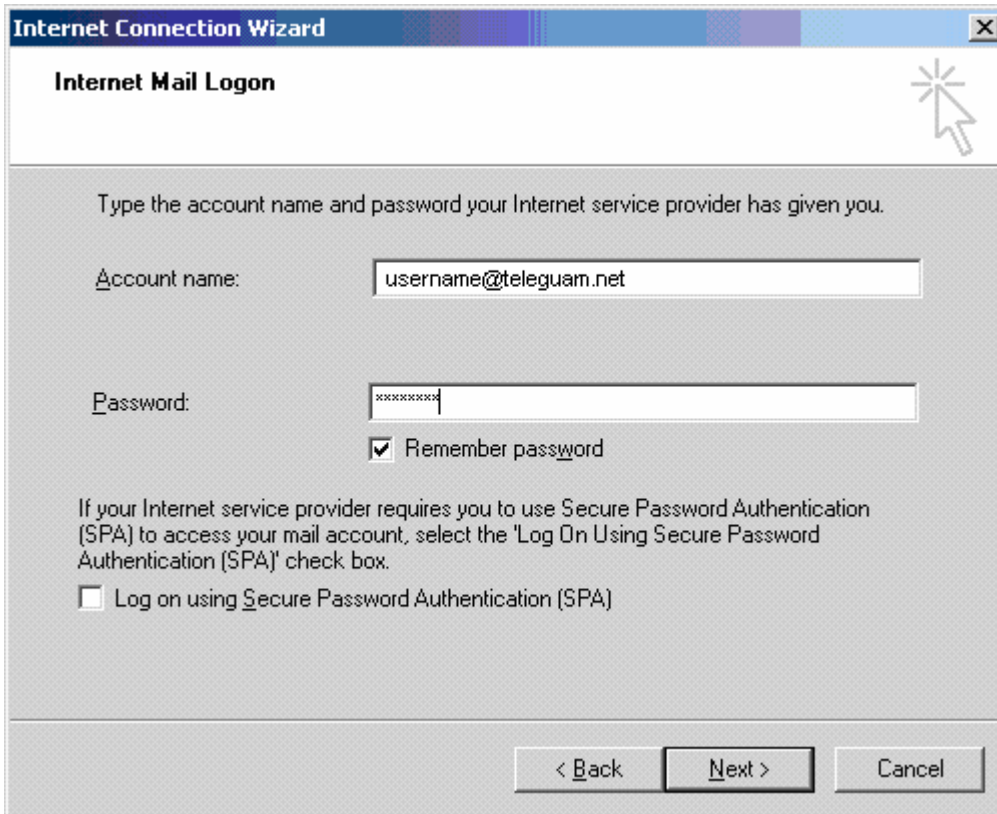
Step 11: Fill in the Outgoing mail (SMTP) server field with smtp.teleguam.net

Step 12: Click the Next button



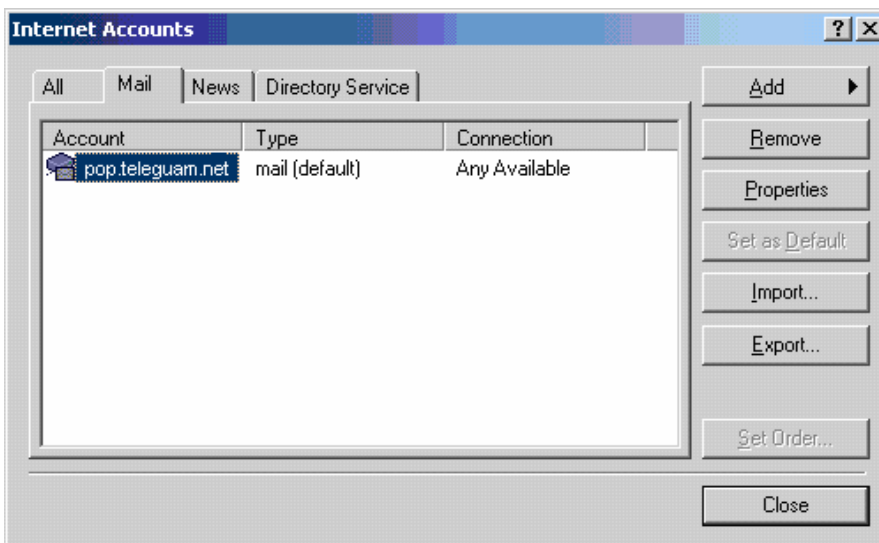
Step 13: In the Account name field, enter your Email Address.

Step 14: Enter your password into the Password field, then click Next.



Step 15: Click the Finish button

Step 16: Click the OK button



Step 17: Click the Close button