

Mail Server Settings

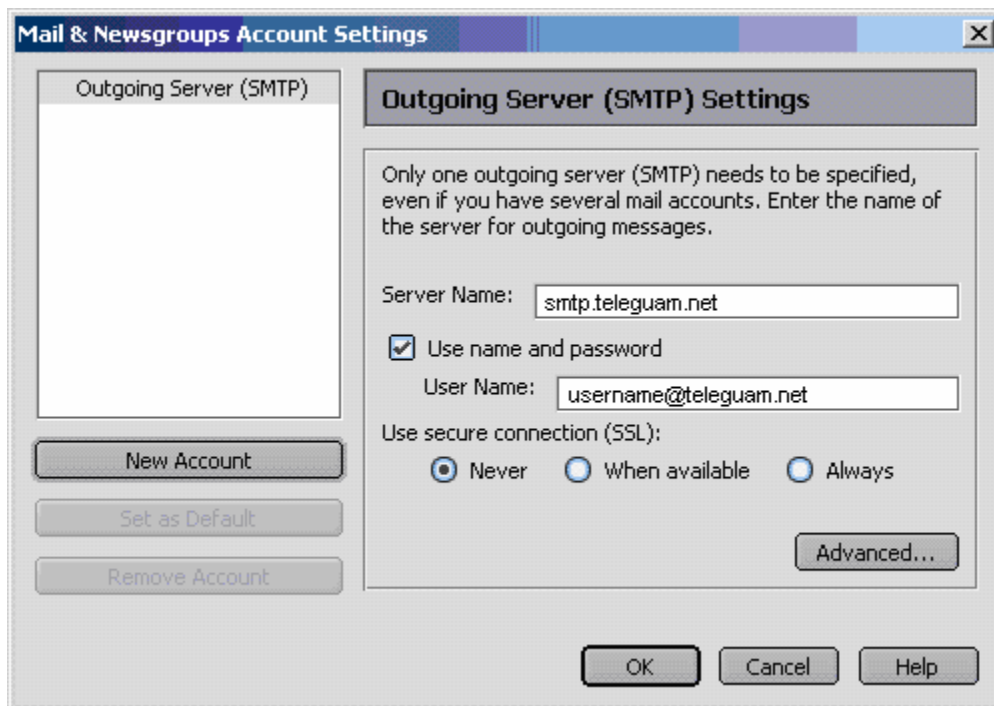
SMTP Outgoing Mail Server: smtp.teleguam.net

POP Incoming Mail Server: pop.teleguam.net

Step 1: Open up your Netscape Mail Program (Or open up your browser: Click on Tasks, then Mail & Newsgroups)

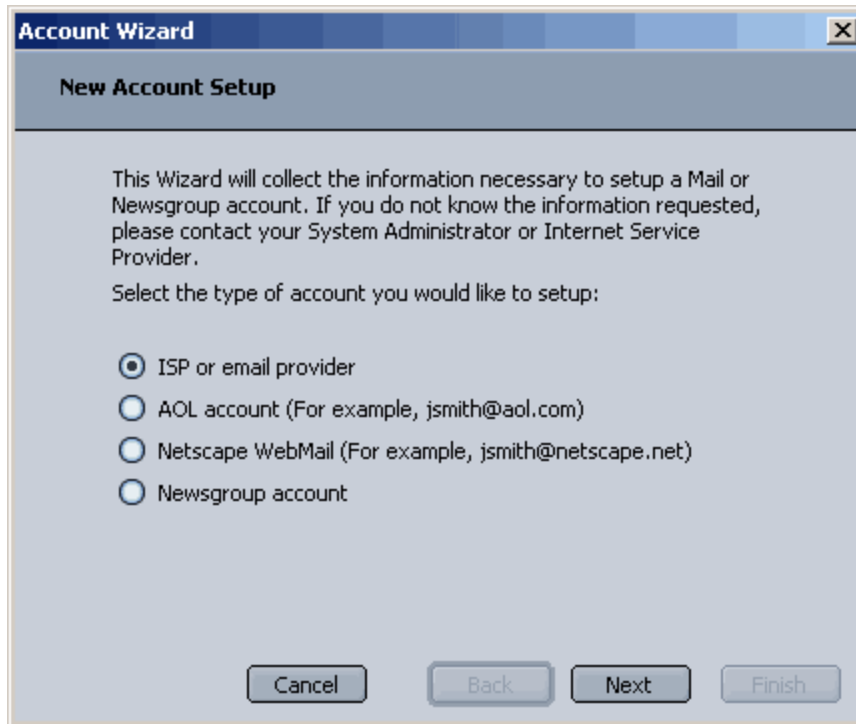
Step 2: Click Edit, then Mail & Newsgroups Account Settings

Step 3: Click the New Account button



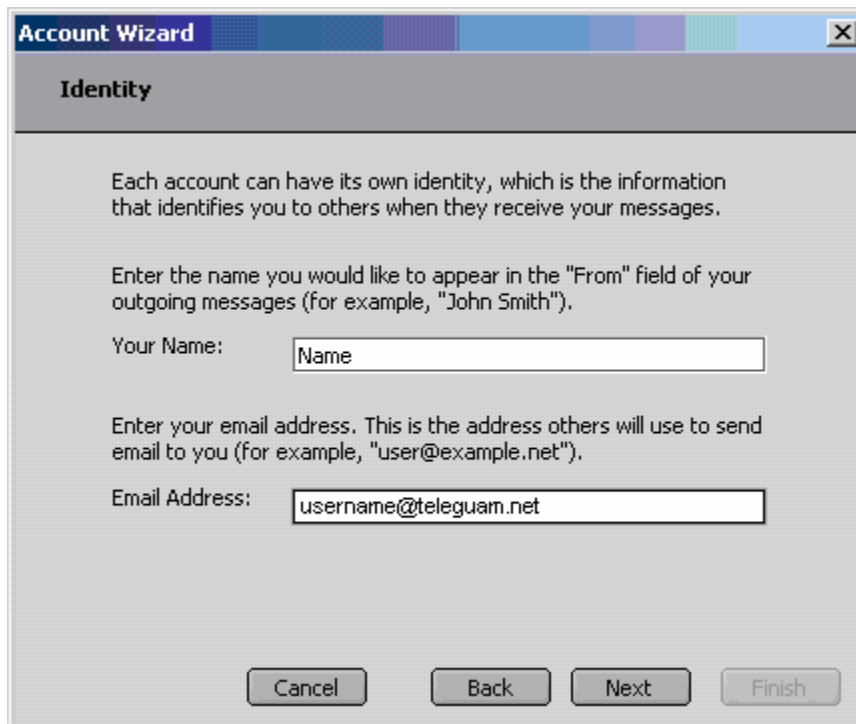
Step 4: Select ISP or email provider

Step 5: Click the Next button



Step 6: Enter in your name into the Your Name field

Step 7: Click the Next button



Step 8: In the Incoming Server section, select POP as the incoming server

Step 9: For the incoming Server Name, type in pop.teleguam.net

Step 10: For the outgoing Server Name, type in smtp.teleguam.net

Account Wizard [X]

Server Information

Incoming Server

Select the type of incoming server you are using.

POP IMAP

Enter the name of your incoming server (for example, "mail.example.net").

Server Name:

Outgoing Server (SMTP)


Enter the name of your outgoing server (SMTP) (for example, "smtp.example.net").

Server Name:

Cancel Back Next Finish

Step 11: For the User Name, type in your TELEGUAM.NET email username (same as your email address).

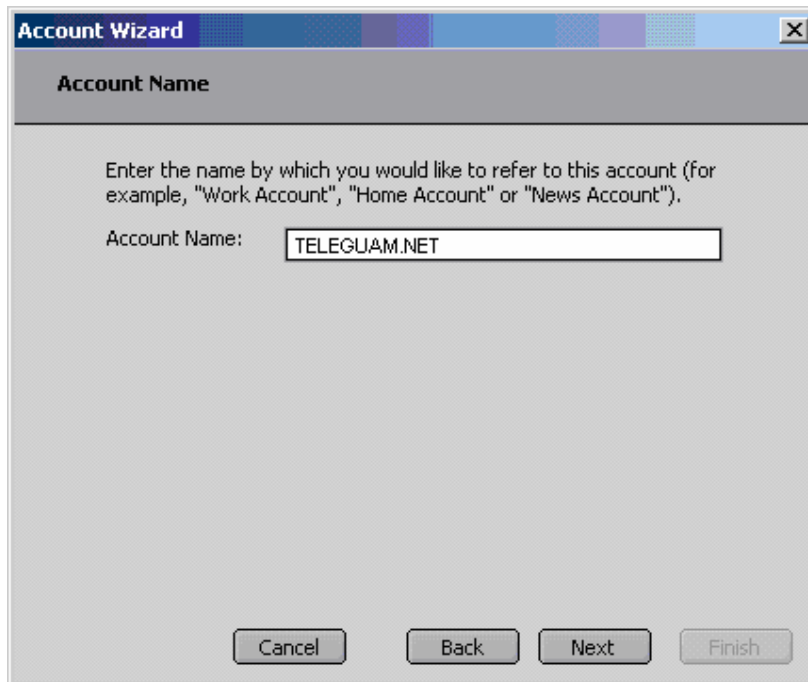
Step 12: Click the Next button



The screenshot shows a dialog box titled "Account Wizard" with a close button (X) in the top right corner. The main heading is "User Name". Below the heading, there is a text instruction: "Enter the user name given to you by your email provider (for example, 'jsmith')." Below this instruction, there is a label "User Name:" followed by a text input field containing the text "username@teleguam.net". At the bottom of the dialog box, there are four buttons: "Cancel", "Back", "Next", and "Finish".

Step 13: For the Account Name, type in TELEGUAM.NET

Step 14: Click the Next button



The screenshot shows a dialog box titled "Account Wizard" with a close button (X) in the top right corner. The main heading is "Account Name". Below the heading, there is a text instruction: "Enter the name by which you would like to refer to this account (for example, 'Work Account', 'Home Account' or 'News Account')." Below this instruction, there is a label "Account Name:" followed by a text input field containing the text "TELEGUAM.NET". At the bottom of the dialog box, there are four buttons: "Cancel", "Back", "Next", and "Finish".

Step 15: Click the Finish button

