

Mail Server Settings

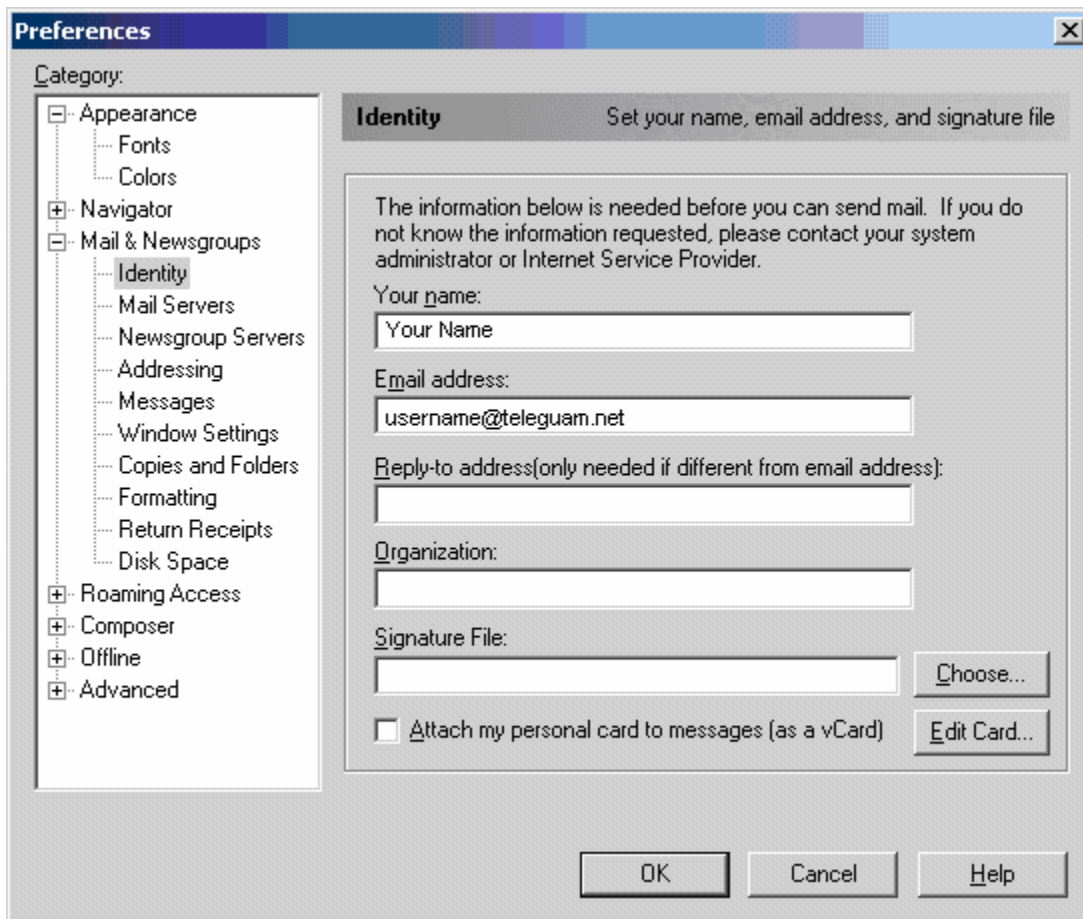
SMTP Outgoing Mail Server: smtp.teleguam.net
POP Incoming Mail Server: pop.teleguam.net

Step 1: Start Netscape.

Step 2: Select Preferences from the Edit menu.

Step 3: Click on the + next to Mail & Groups.

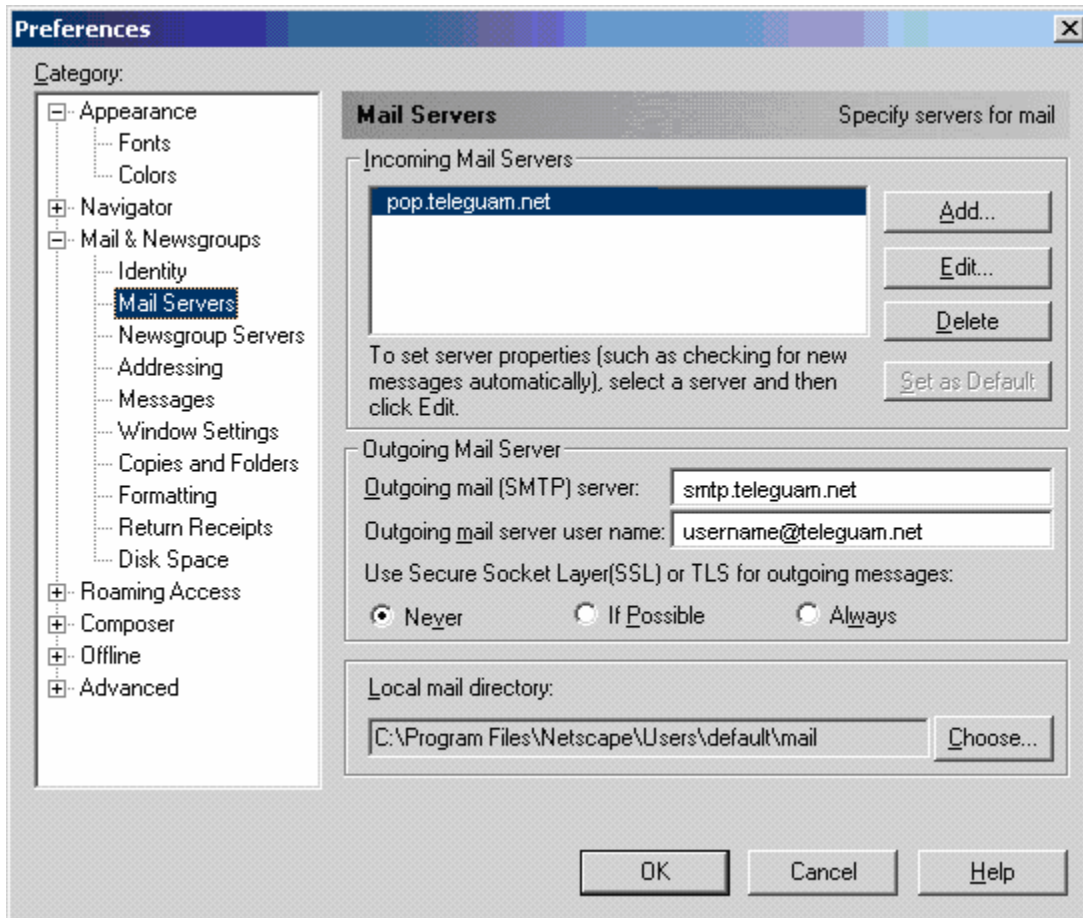
Step 4: Click on Identity.



Step 5: Fill in the Your Name field.

Step 6: Fill in the Email address field.

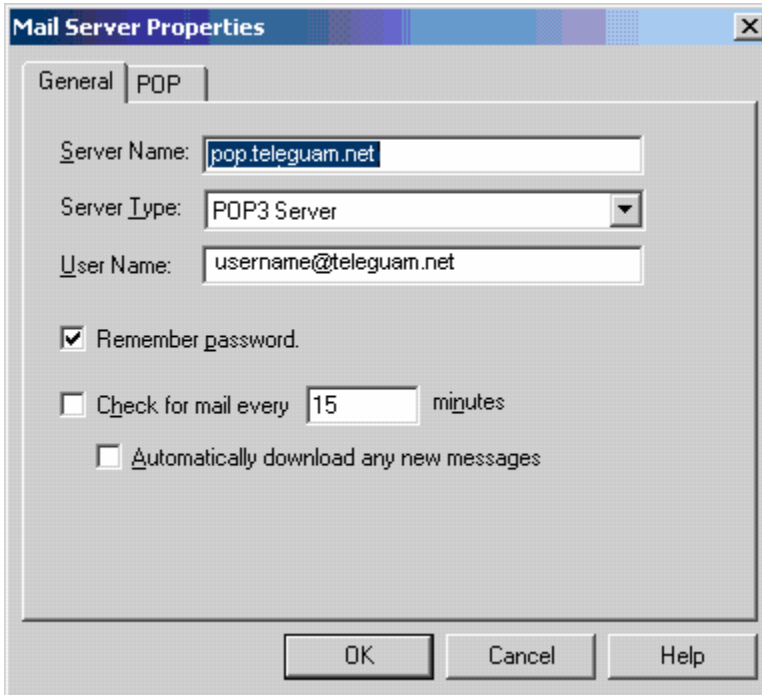
Step 7: Click on Mail Servers.



Step 8: Fill in the Outgoing mail (SMTP) server field with smtp.teleguam.net.

Step 9: For "Outgoing mail server user name", make sure that your TELEGUAM.NET mail username is entered (same as your email address).

Step 10: Click the Add button



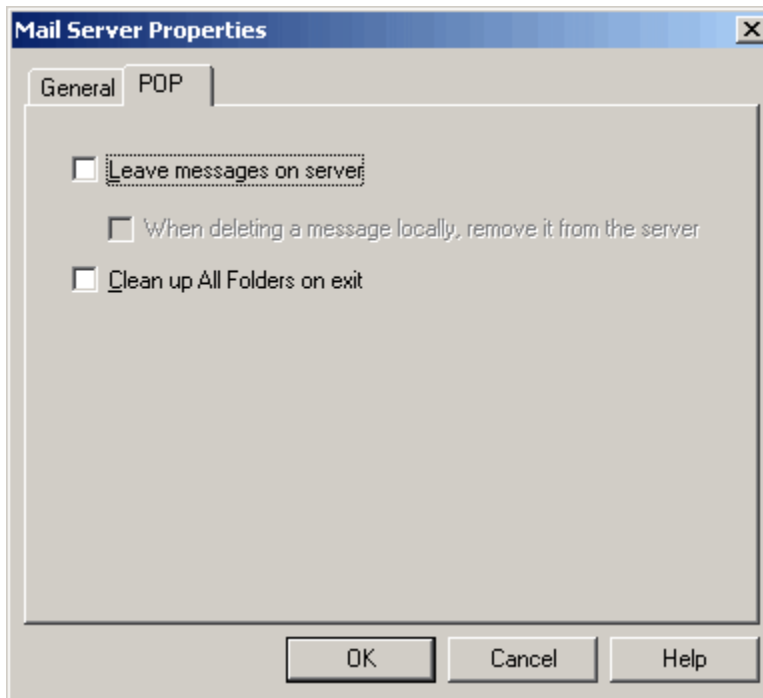
Step 11: Fill in the Incoming mail (POP3) server fields with pop.teleguam.net.

Step 12: Mail Server type should be set to POP3

Step 13: Fill in the Mail server user name field with your email address.

Step 14: Check Remember mail password.

Step 15: Click the POP tab



Step 16: Uncheck the box that says "Leave messages on server"

Step 17: Click OK.

Step 18: Click OK again.