

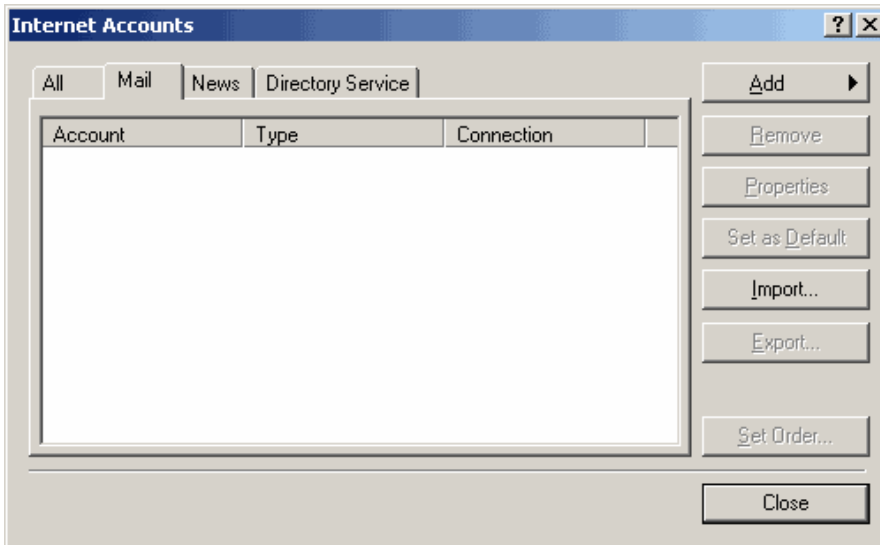
Mail Server Settings

SMTP Outgoing Mail Server: smtp.teleguam.net
POP Incoming Mail Server: pop.teleguam.net

Step 1: Select Accounts from the Tools menu

Step 2: Click the Add Button

Step 3: Select Mail from the drop-down menu.



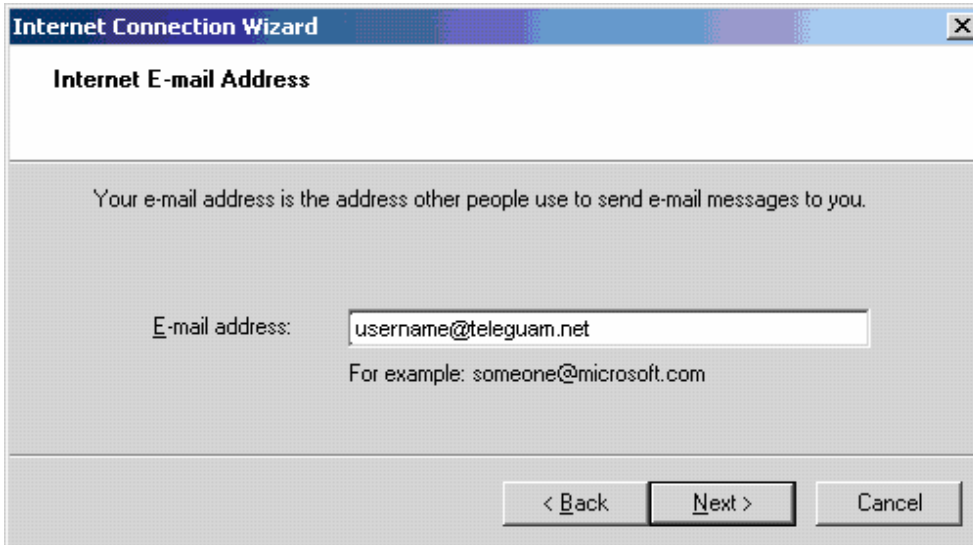
Step 4: Enter your name in the Display Name field.

Step 5: Click the Next button.



Step 6: Enter your Email Address.

Step 7: Click the Next button.



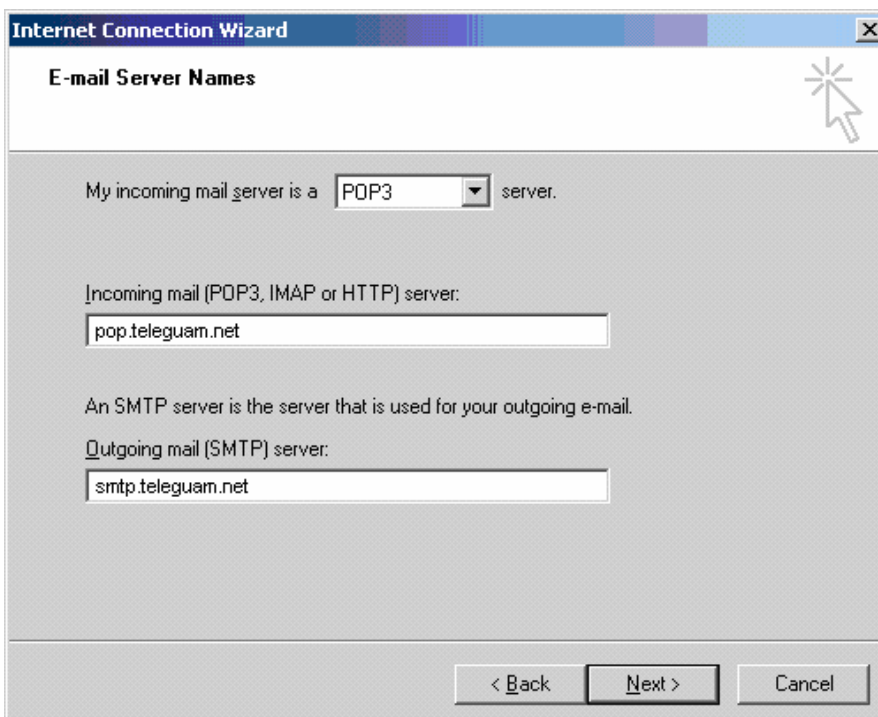
The screenshot shows the 'Internet Connection Wizard' dialog box with the 'Internet E-mail Address' tab selected. The window title is 'Internet Connection Wizard'. The main heading is 'Internet E-mail Address'. Below the heading, there is a text box containing 'username@teleguam.net'. Below the text box, there is a note: 'Your e-mail address is the address other people use to send e-mail messages to you.' Below the note, there is a label 'E-mail address:' followed by the text box. Below the text box, there is an example: 'For example: someone@microsoft.com'. At the bottom of the dialog box, there are three buttons: '< Back', 'Next >', and 'Cancel'.

Step 8: Select POP3 from the drop down menu.

Step 9: Fill in the Incoming mail (POP3) server field with pop.teleguam.net

Step 10: Fill in the Outgoing mail (SMTP) server field with smtp.teleguam.net

Step 11: Click the Next button



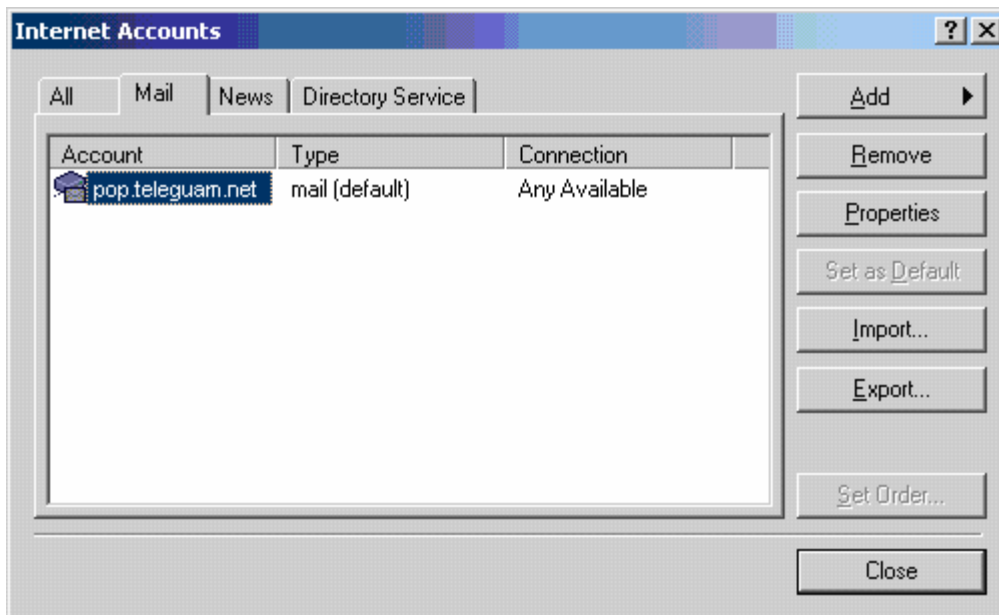
The screenshot shows the 'Internet Connection Wizard' dialog box with the 'E-mail Server Names' tab selected. The window title is 'Internet Connection Wizard'. The main heading is 'E-mail Server Names'. Below the heading, there is a text box containing 'pop.teleguam.net'. Below the text box, there is a label 'Incoming mail (POP3, IMAP or HTTP) server:'. Below the label, there is a text box containing 'pop.teleguam.net'. Below the text box, there is a note: 'An SMTP server is the server that is used for your outgoing e-mail.' Below the note, there is a label 'Outgoing mail (SMTP) server:'. Below the label, there is a text box containing 'smtp.teleguam.net'. At the bottom of the dialog box, there are three buttons: '< Back', 'Next >', and 'Cancel'.

Step 12: In the Account name field, enter your email address. Enter your password into the Password field

Step 13: Click the Next button



Step 14: Click the Finish button



Step 15: Click the OK button

Step 16: Click the Close button