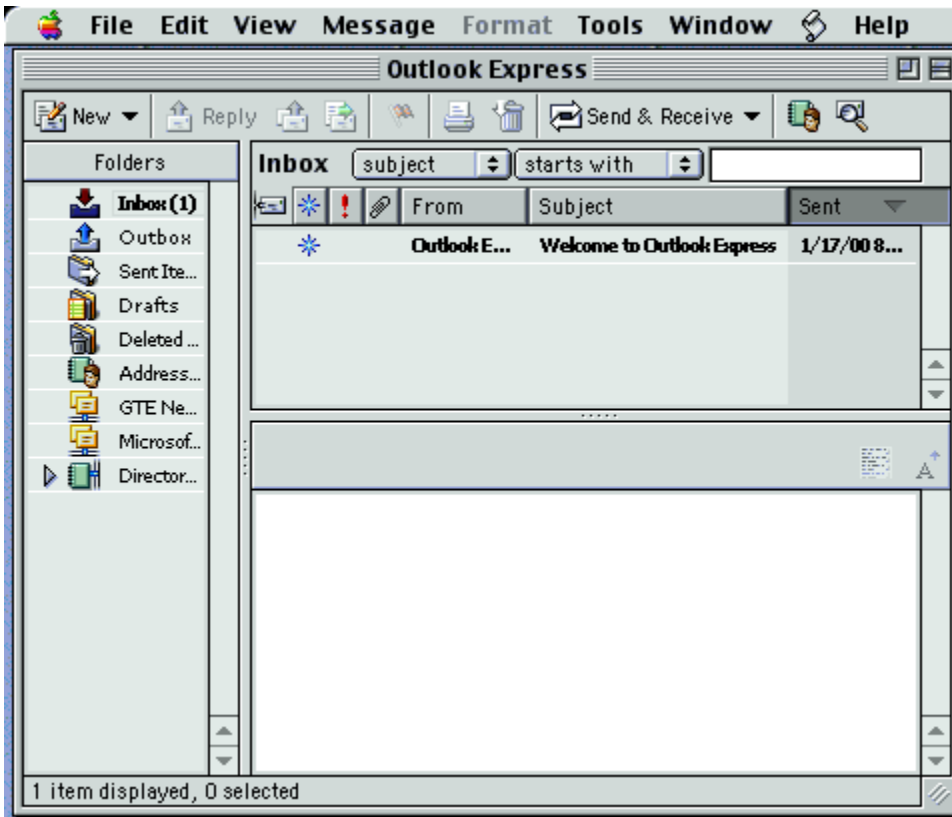


Mail Server Settings

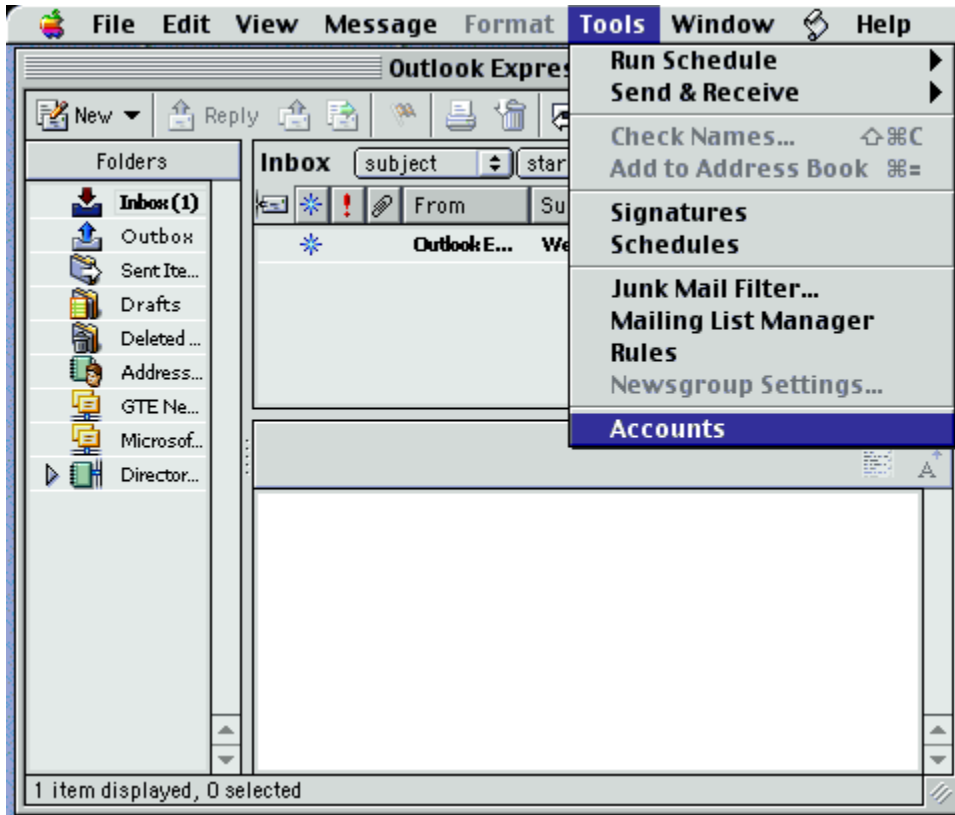
SMTP Outgoing Mail Server: smtp.teleguam.net

POP Incoming Mail Server: pop.teleguam.net

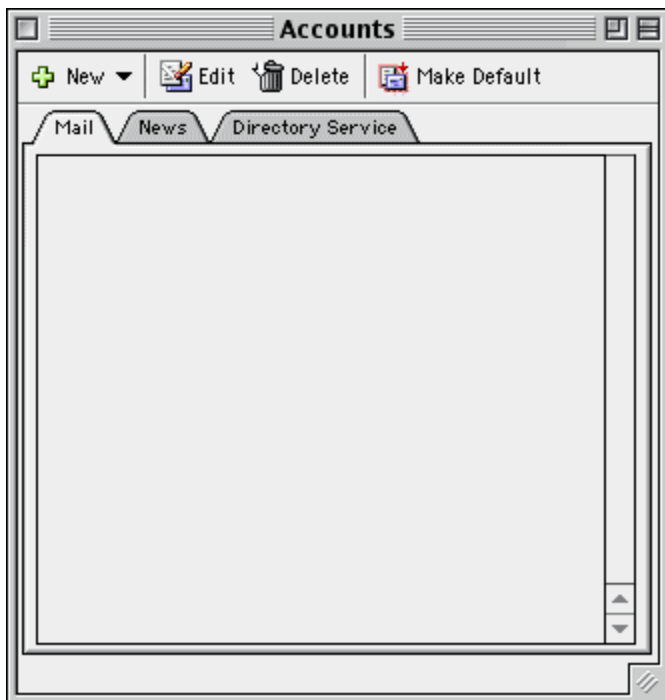
Step 1: Open Microsoft Outlook 5



Step 2: Click on Tools, then select Accounts

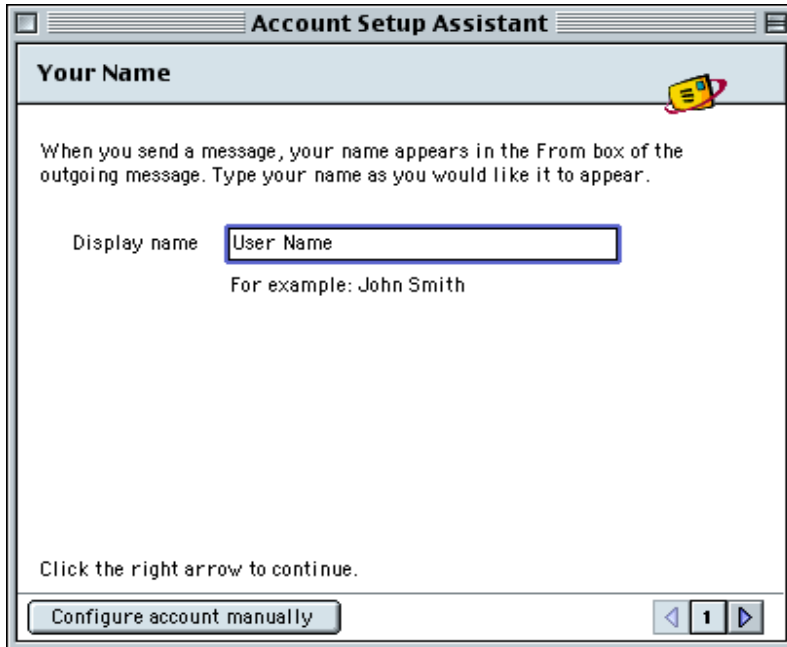


Step 3: Under Accounts, click New



Step 4: For the Display name, type in your name

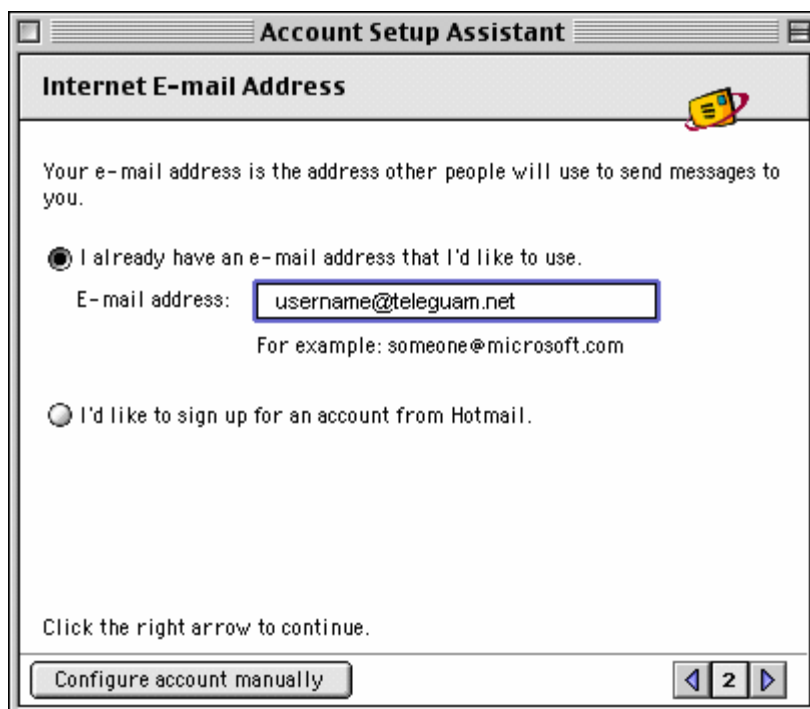
Step 5: Click the right arrow



Step 6: Select "I already have an e-mail address that I'd like to use"

Step 7: In the e-mail address field, type in your TELEGUAM.NET e-mail address

Step 8: Click the right arrow

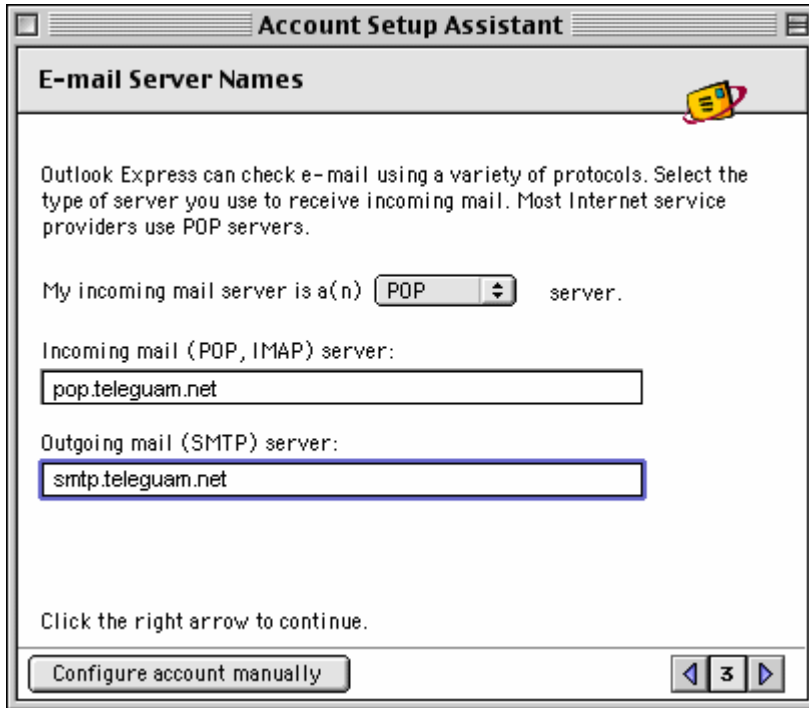


Step 9: The incoming mail server should be selected as a POP Server

Step 10: For the Incoming mail server, type pop.teleguam.net

Step 11: For the Outgoing mail server, type smtp.teleguam.net

Step 12: Click the right arrow



Step 13: For the Account ID, type in your GTA Email username (same as your email address)

Step 14: Then type in your password

Step 15: Check the Save password box (optional)

Step 16: Click the right arrow

Step 17: For the Account name, type in TELEGUAM.NET, then click Finish