

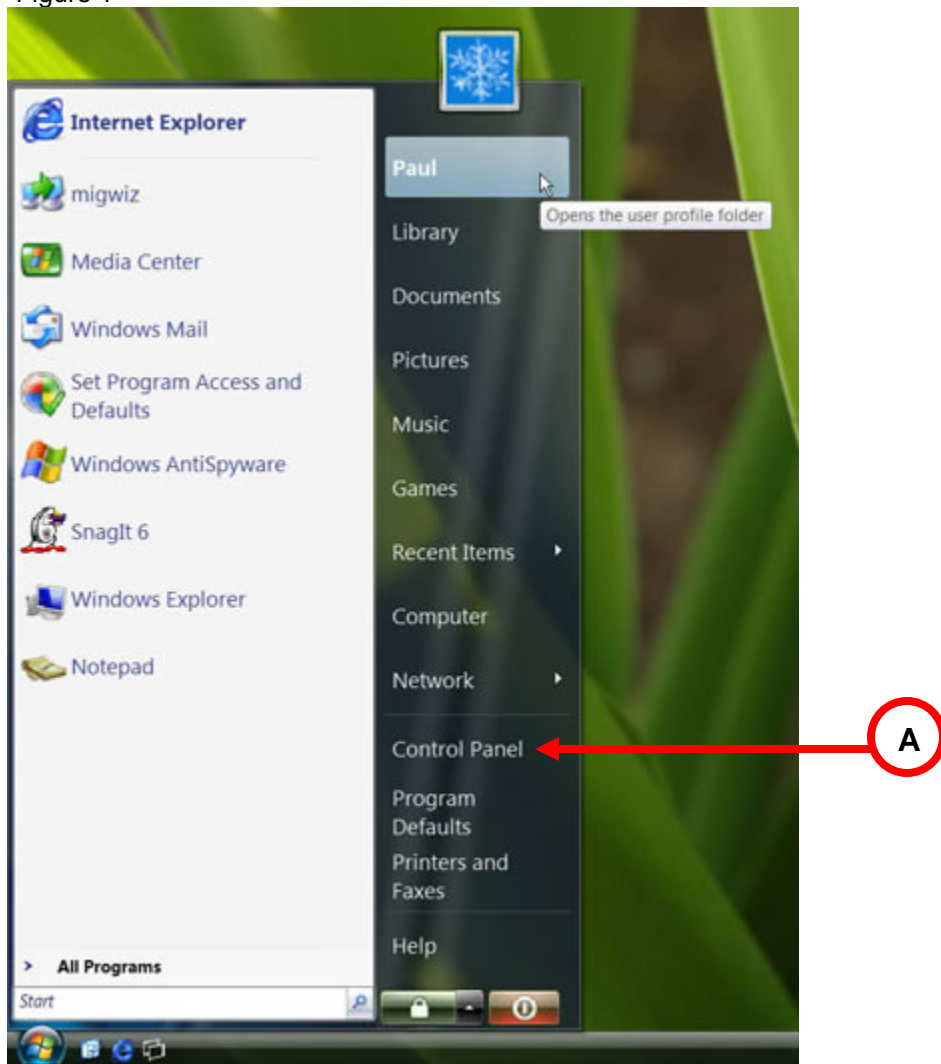
Windows Vista DSL Configuration



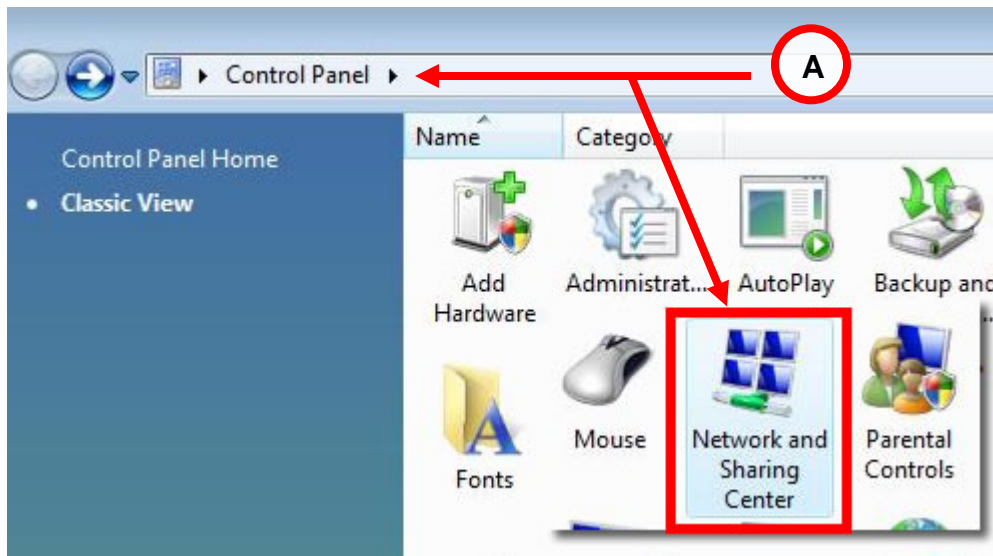
Step 1: Click on Windows logo located at the bottom left.

Step 2: Select “Control Panel” shown in Figure 1.

Figure 1

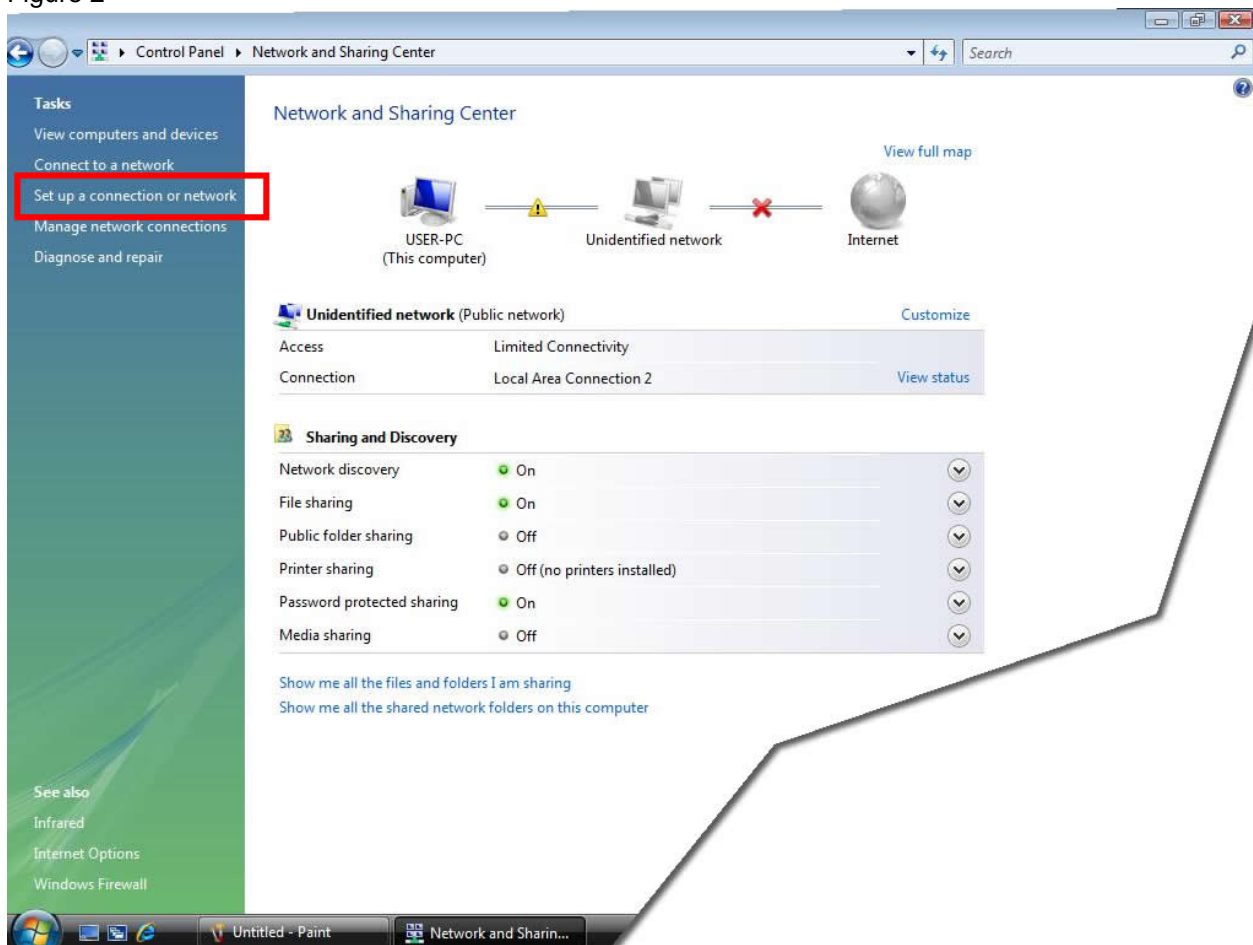


Step 3: From Control Panel, Double click on Network and Sharing Center icon.



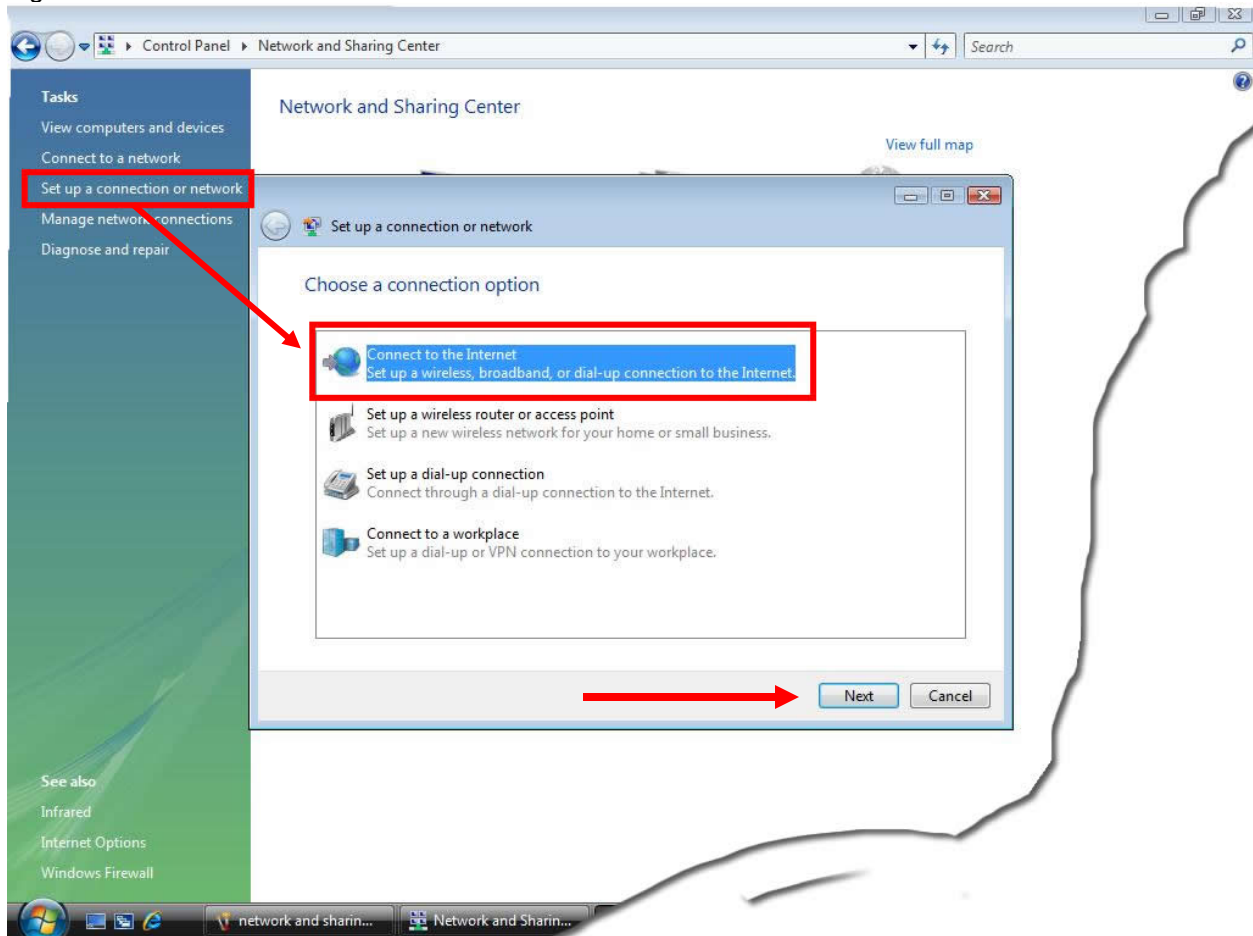
Step 4: Select “Set up a connection or network” shown in Figure 2.

Figure 2



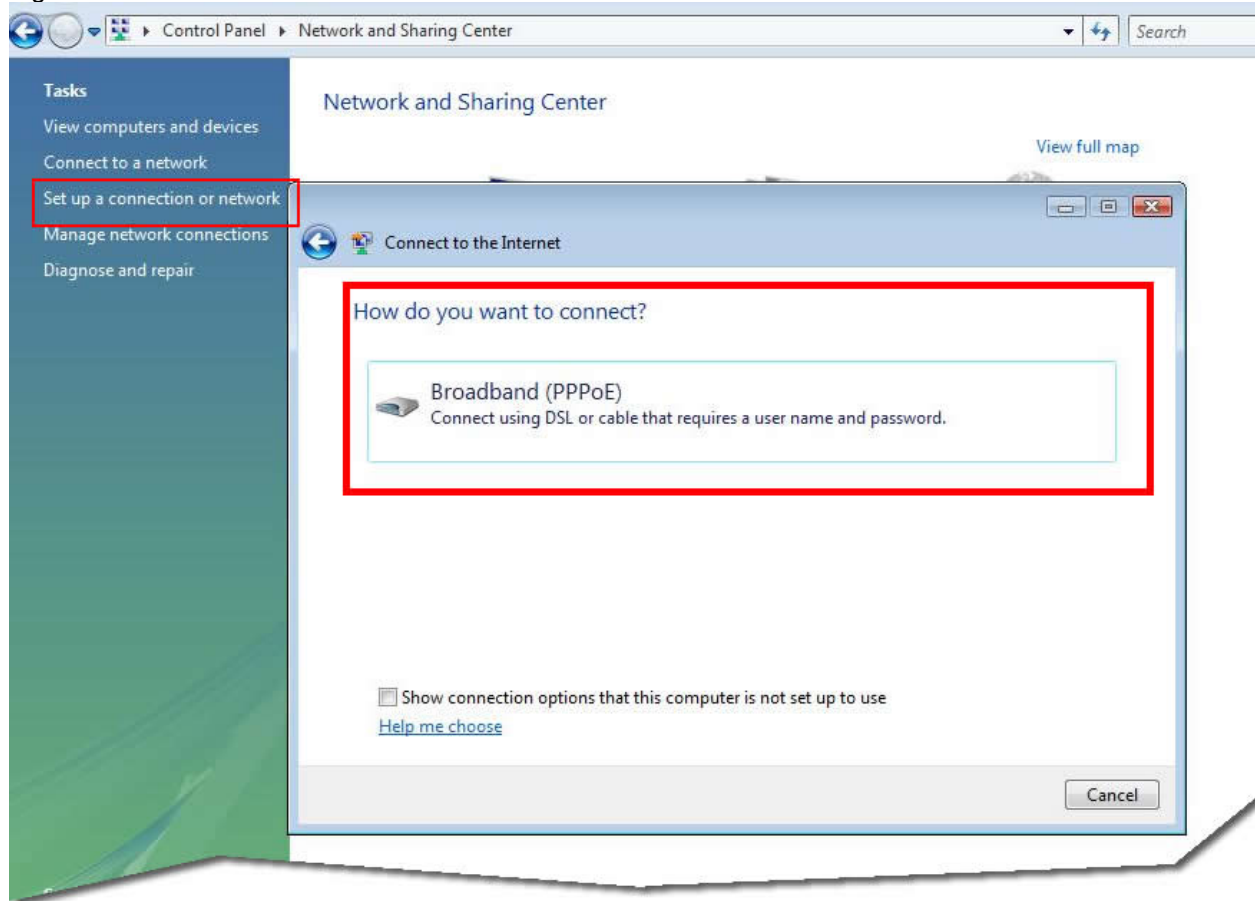
Step 5: Select “Connect to the Internet”, shown in Figure 3. Select “Next” at the bottom.

Figure 3



Step 6: Select Broadband (PPPoE) shown in Figure 4.

Figure 4



Step 7: Type in your username and password (all lowercase) provided by GTA Spyder DSL shown in Figure 5. Click Connect.

Figure 5



Step 8: You are now connected to the internet. Click “Browse the Internet now” shown in Figure 6.

Figure 6

