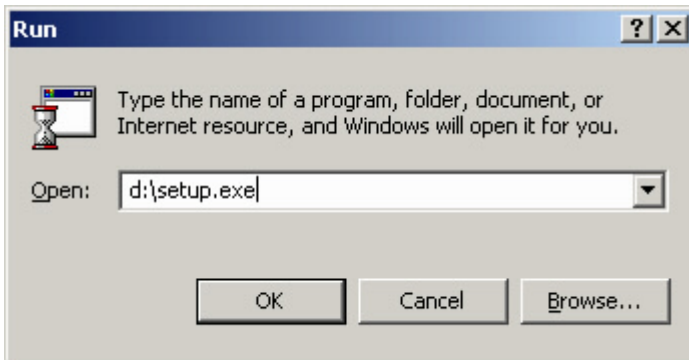
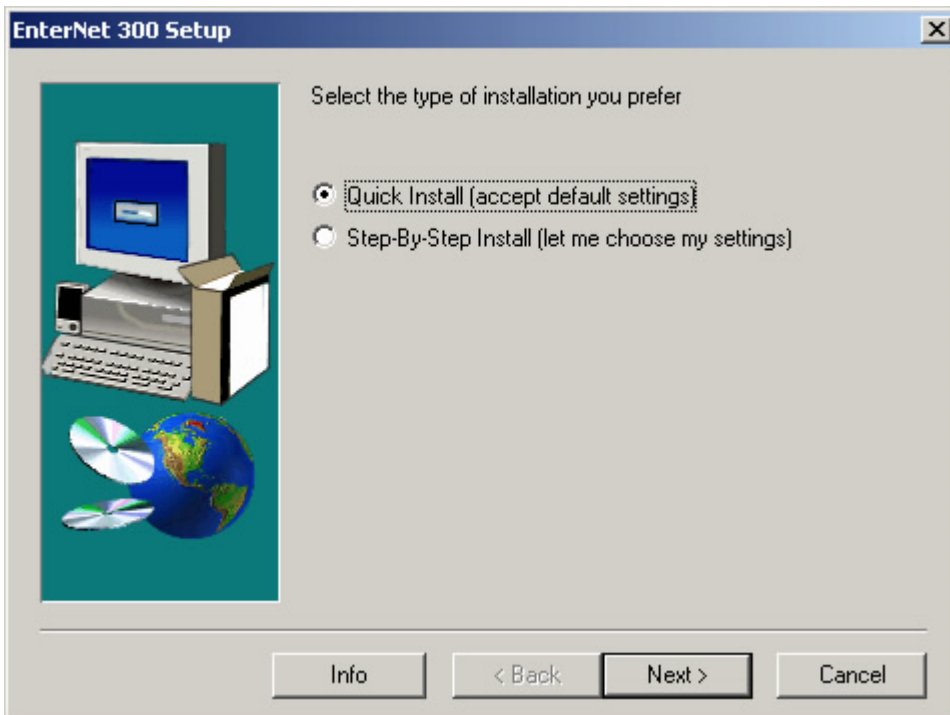


Step 1: Insert CD into CD-ROM drive.

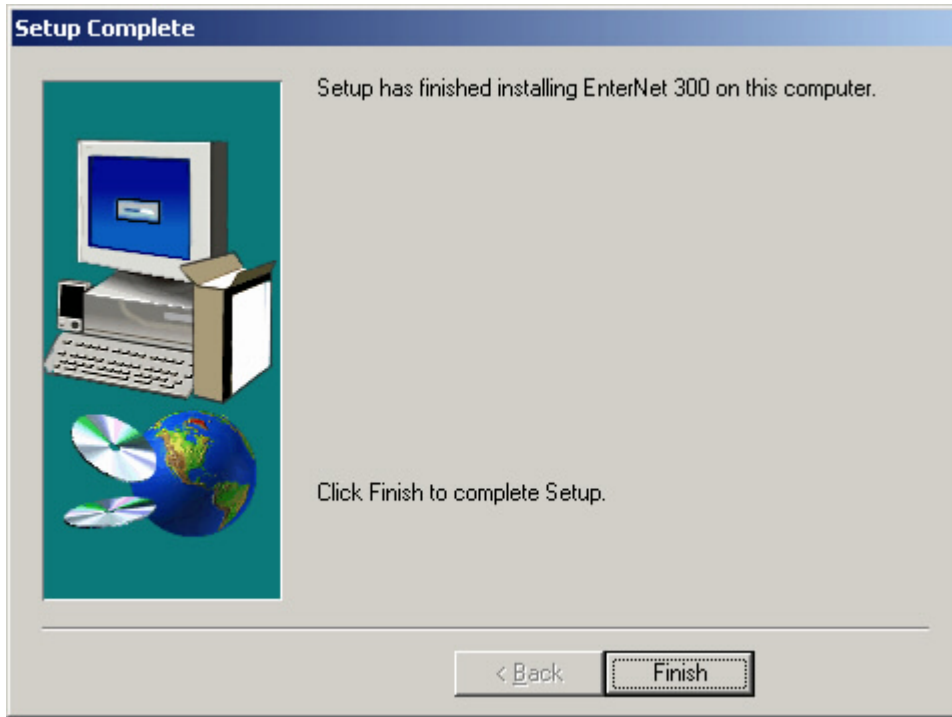
Step 2: If auto installation does not begin, click on start, run, & type the "setup.exe" command as shown in figure 1. If d:\ is not your cd-rom drive, please input the correct drive letter.



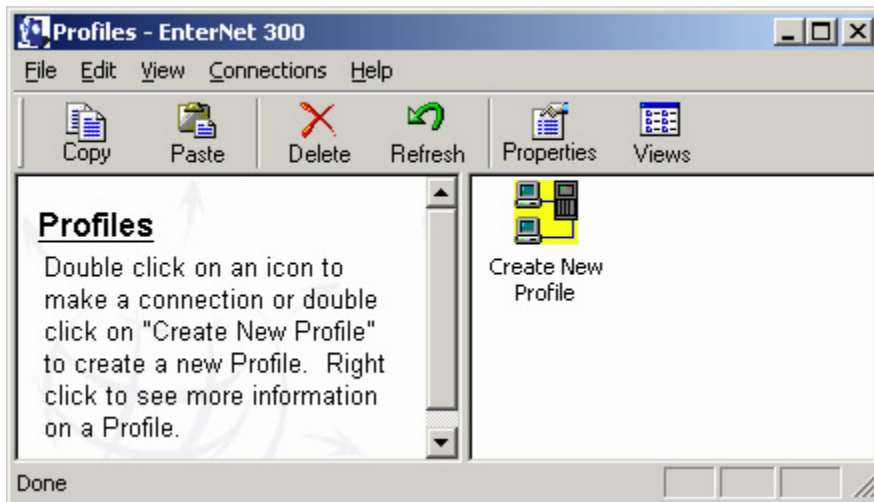
Step 3: Click next.



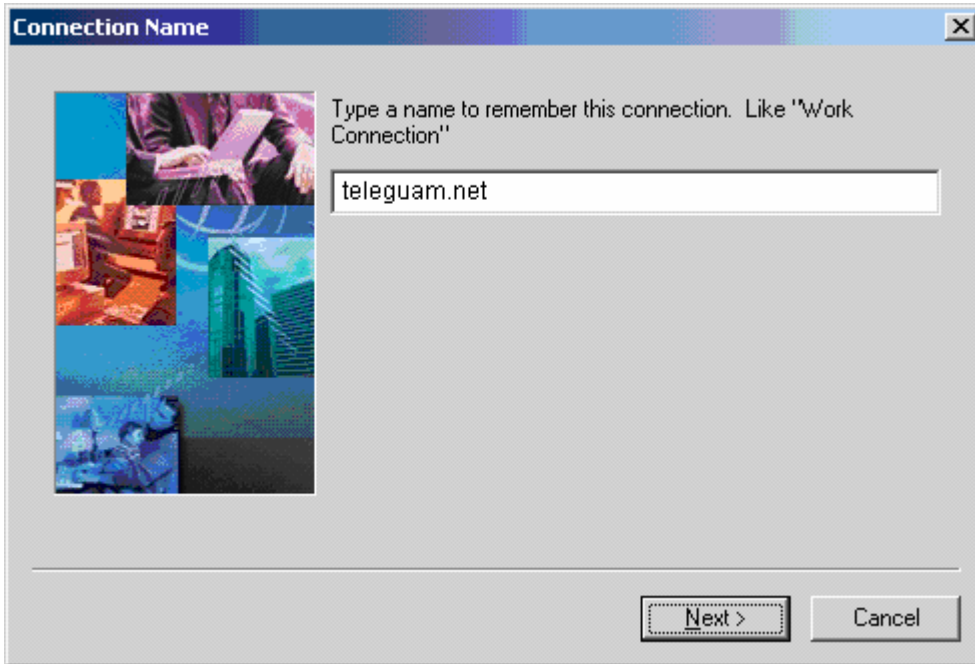
Step 4: Click on "Finish".



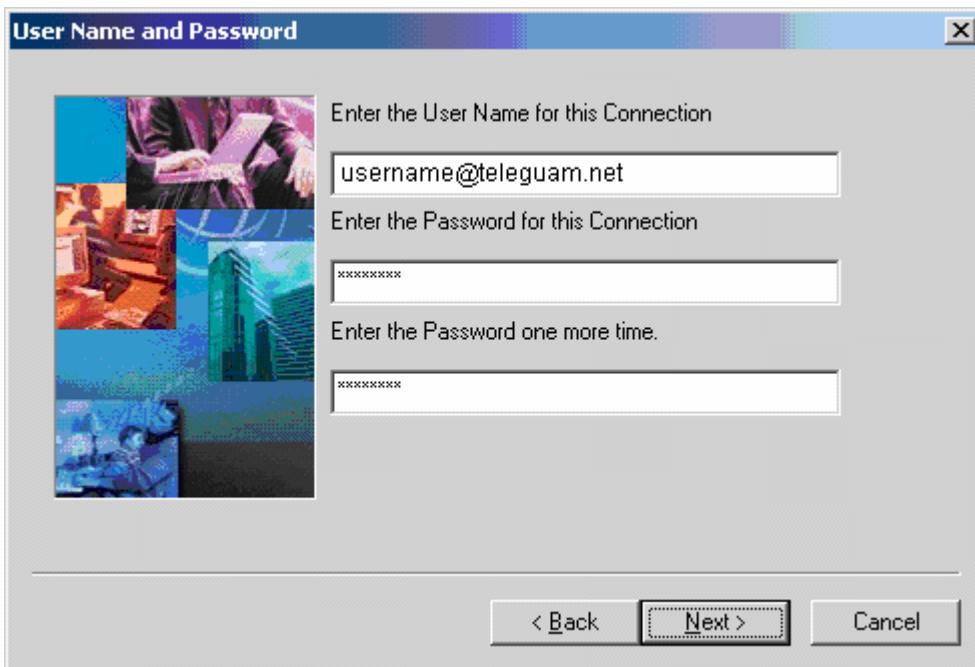
Step 5: Double click on "Create New Profile"



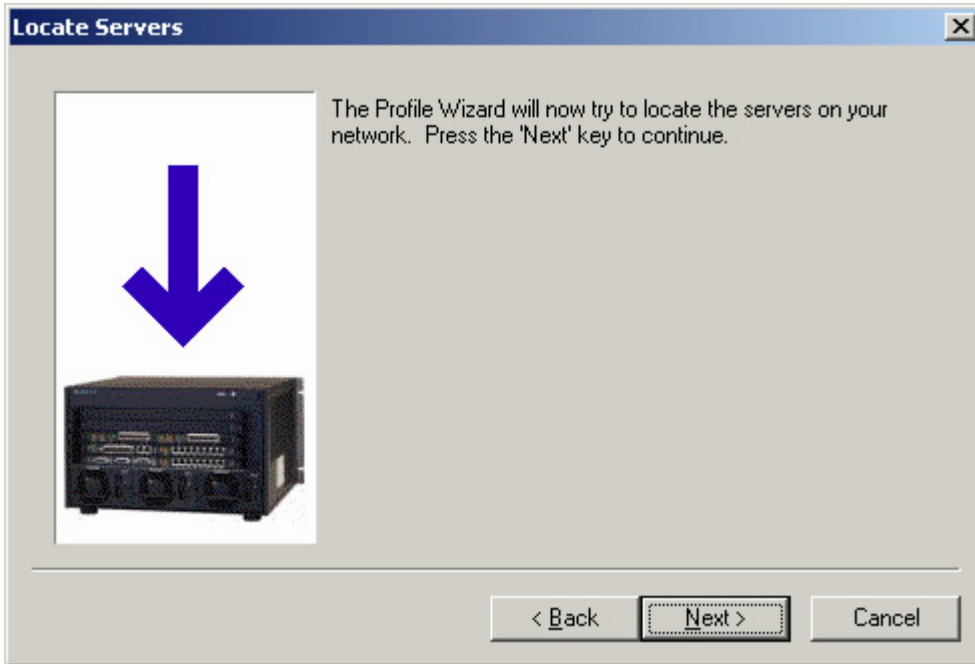
Step 6: Enter a name for the connection, ex: teleguam.net, click on next.



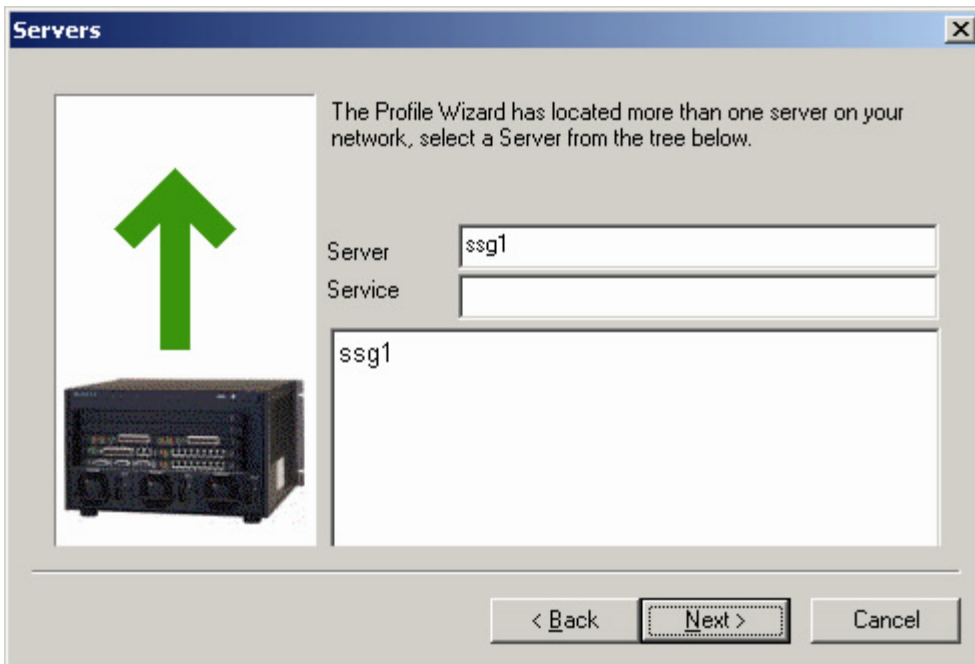
Step 7: Enter your username, ex: username@teleguam.net, and password then click on next.



Step 8: Click on next to locate servers.



Step 9: Server "ssg1" located. Click on next to continue.



Step 10: Click Finish to complete connection profile creation.