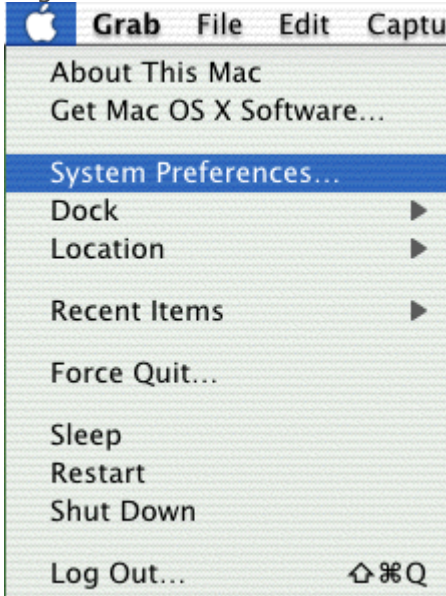


Step 1: Shown in Figure 1, open the Apple menu and select System Preferences.

Figure 1



Step 2: Click on the "Network" icon.

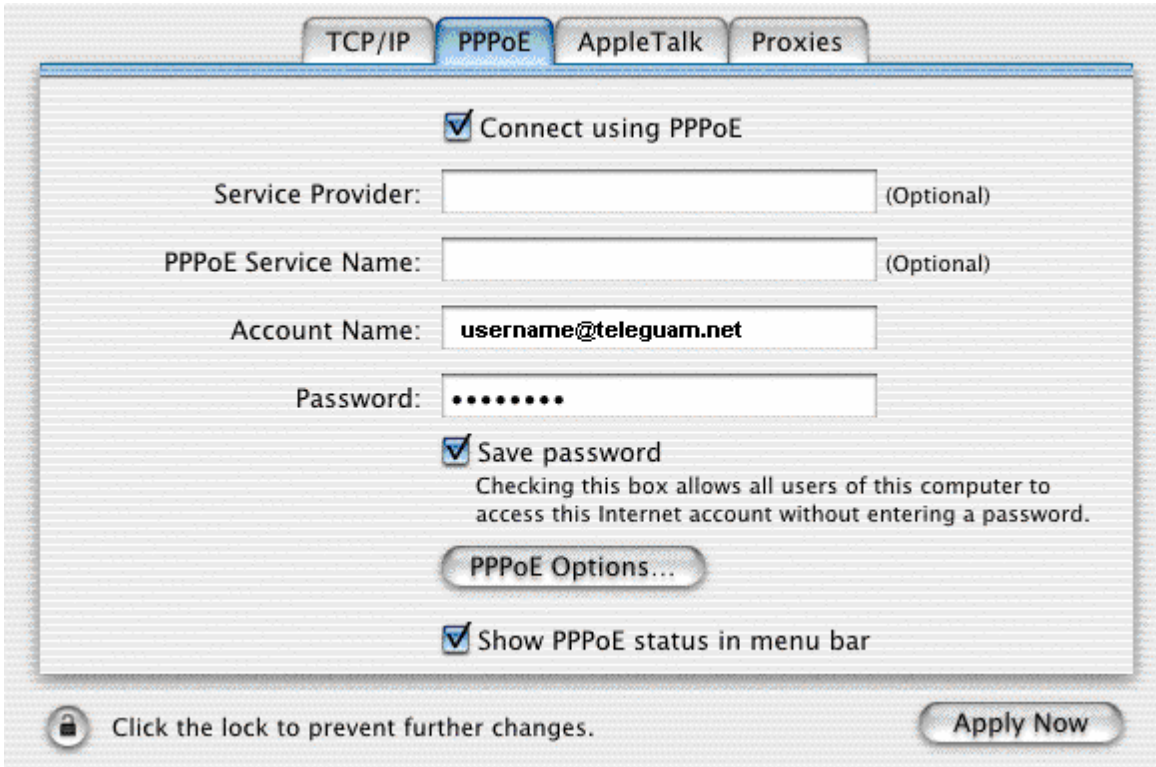
Step 3: Shown in Figure 2, select "Built-in Ethernet" in the "Show" options.

Figure 2



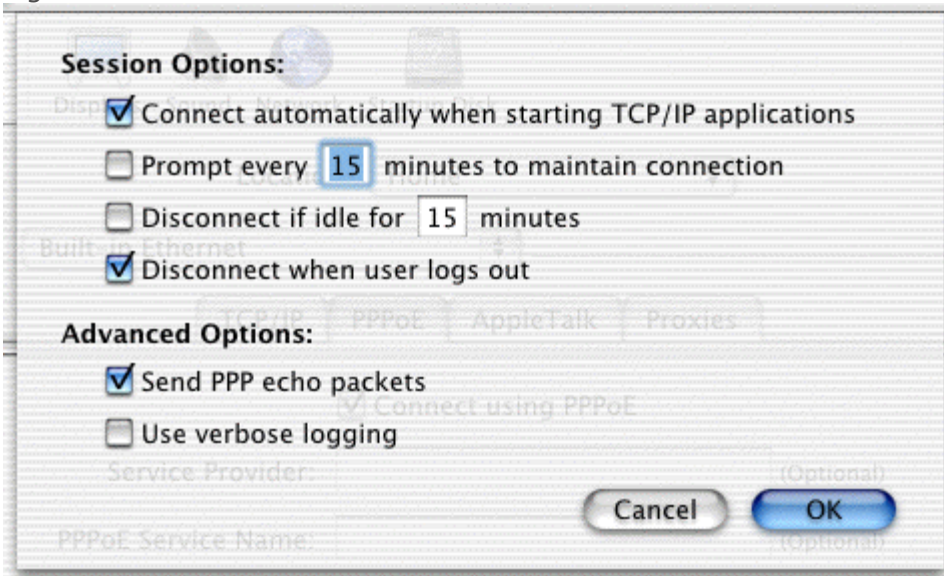
Step 4: Shown in Figure 3, under "PPPoE" select "Connect using PPPoE", under "Account Name:" type in your username@teleguam.net, under "Password:" type in your password, select "Save password", select "Show PPPoE status in menu bar", click on the "PPPoE Options..." button.

Figure 3



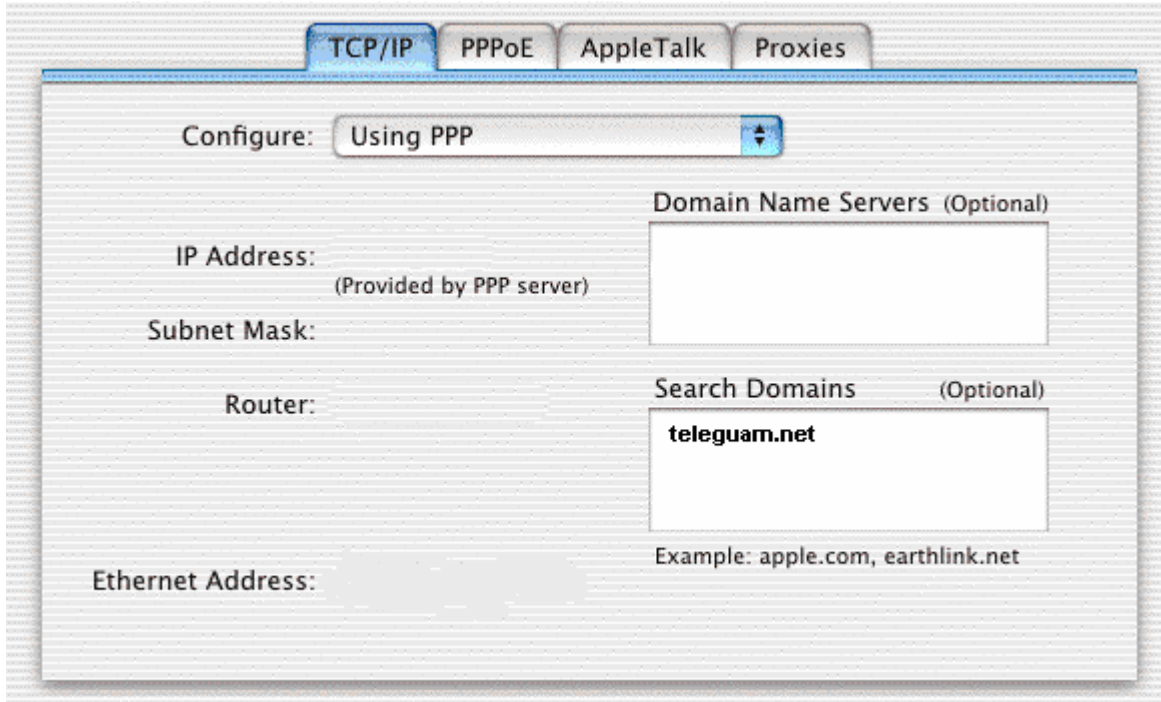
Step 5: Shown in Figure 4, only check boxes "Connect automatically when starting TCP/IP applications", "Disconnect when user logs out", "Send PPP echo packets" and then click on "OK".

Figure 4



Step 6: Shown in Figure 5, select the "TCP/IP" tab, select "Using PPP" in the "Configure:" option, in the "IP Address:" type TELEGUAM.NET's Domain Name Server addresses as shown below, under the "Router:" option type in teleguam.net.

Figure 5



Step 7: Click on "Apply Now" then close the "Network" window and you are set.