

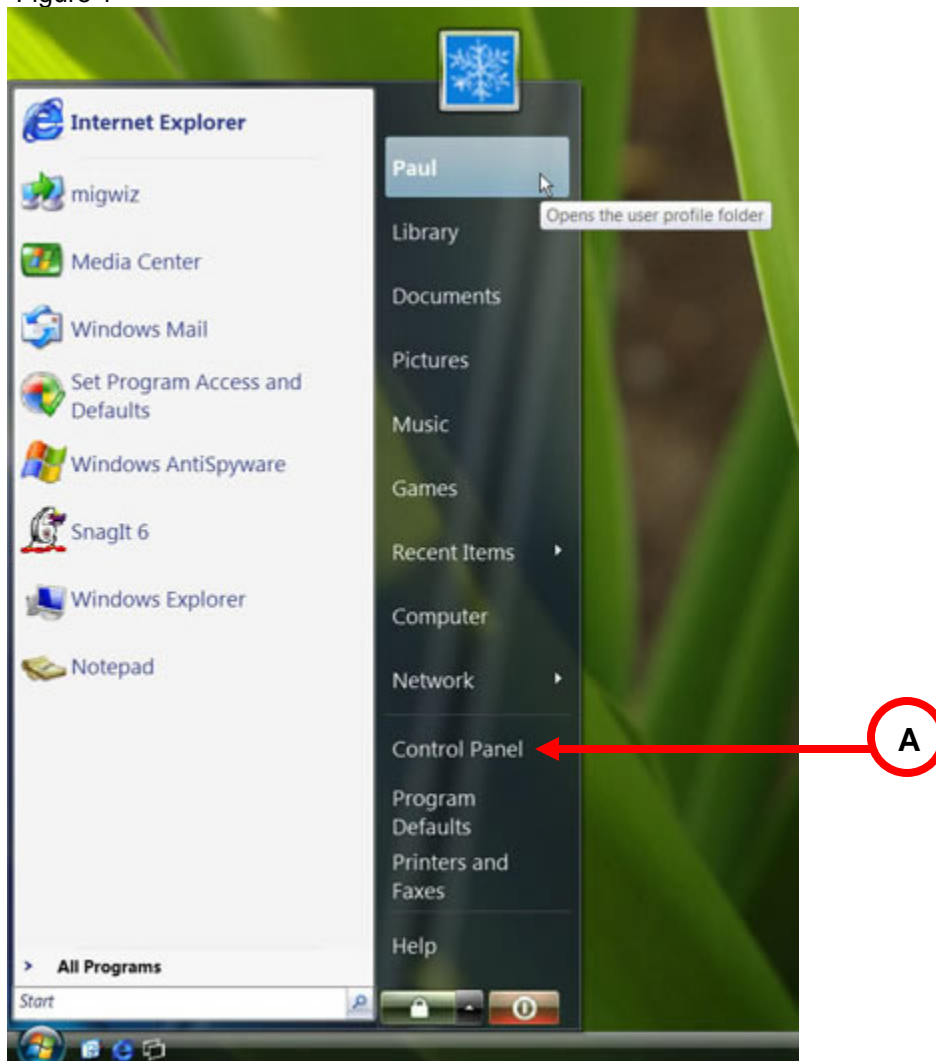
# Windows Vista Dial Up Configuration



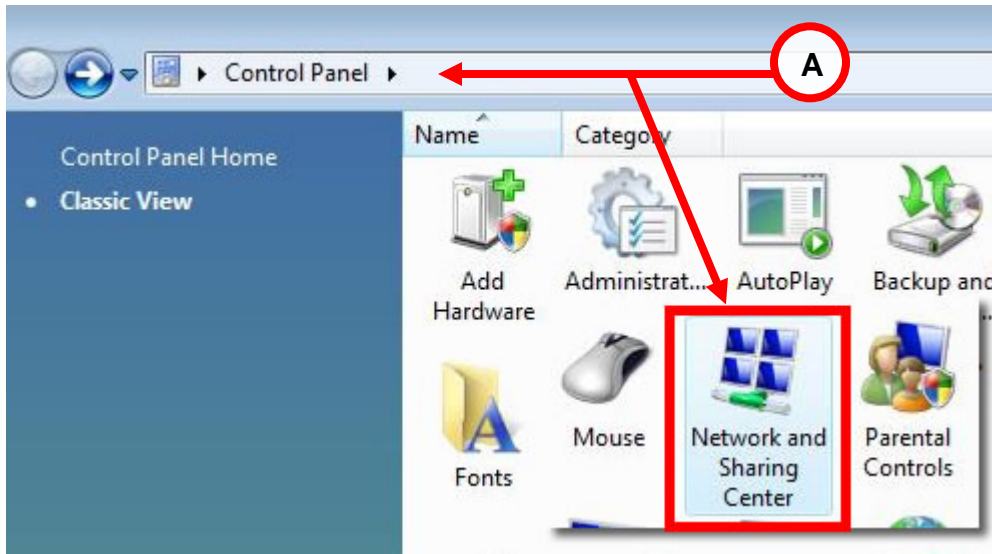
**Step 1:** Click on Windows logo located at the bottom left.

**Step 2:** Select “Control Panel” shown in Figure 1.

Figure 1

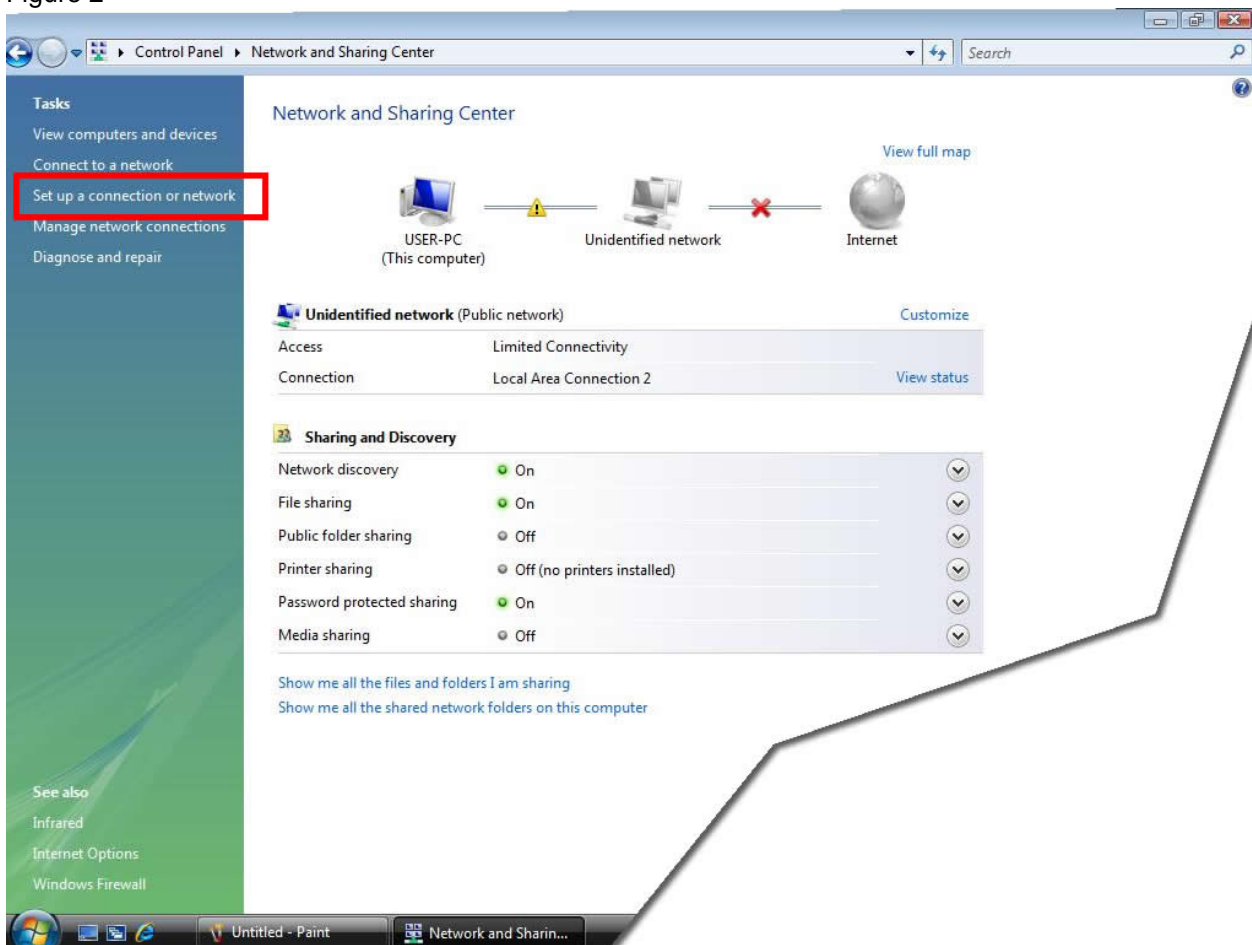


**Step 3:** From Control Panel, Double click on Network and Sharing Center icon.



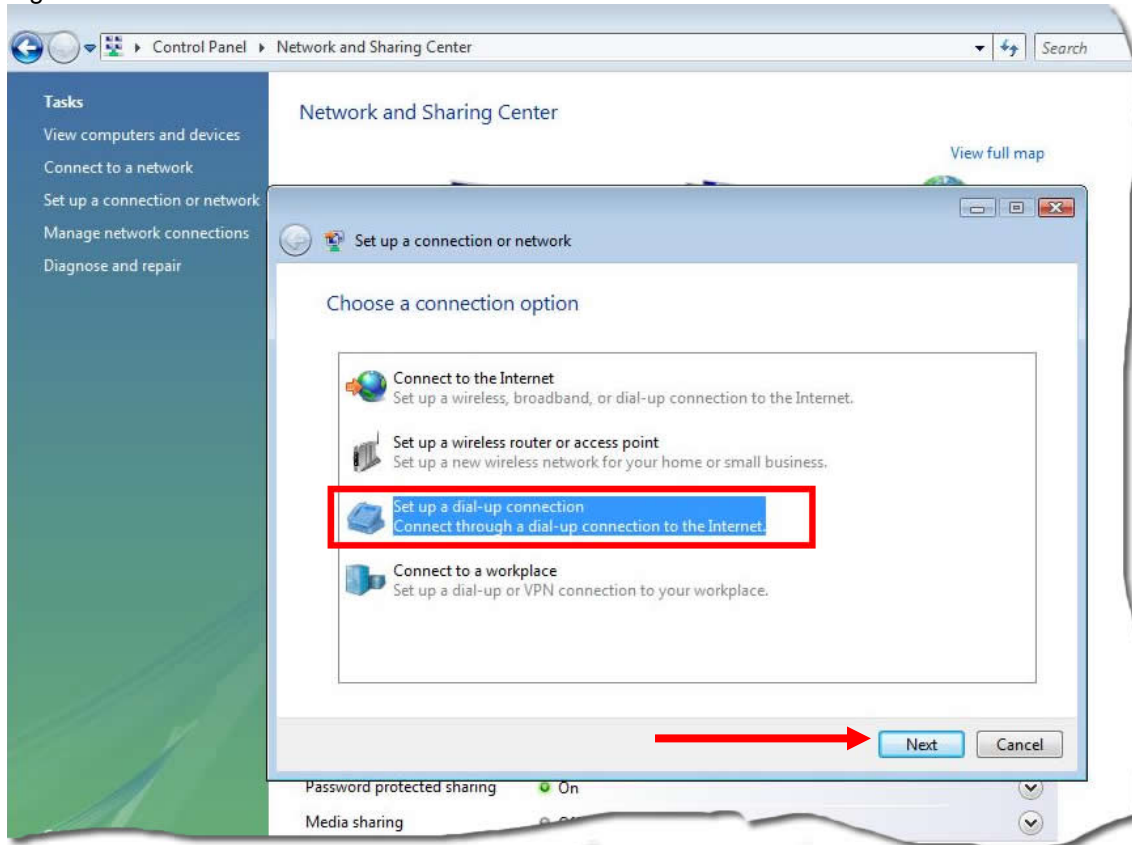
**Step 4:** Select “Set up a connection or network” shown in Figure 2.

Figure 2



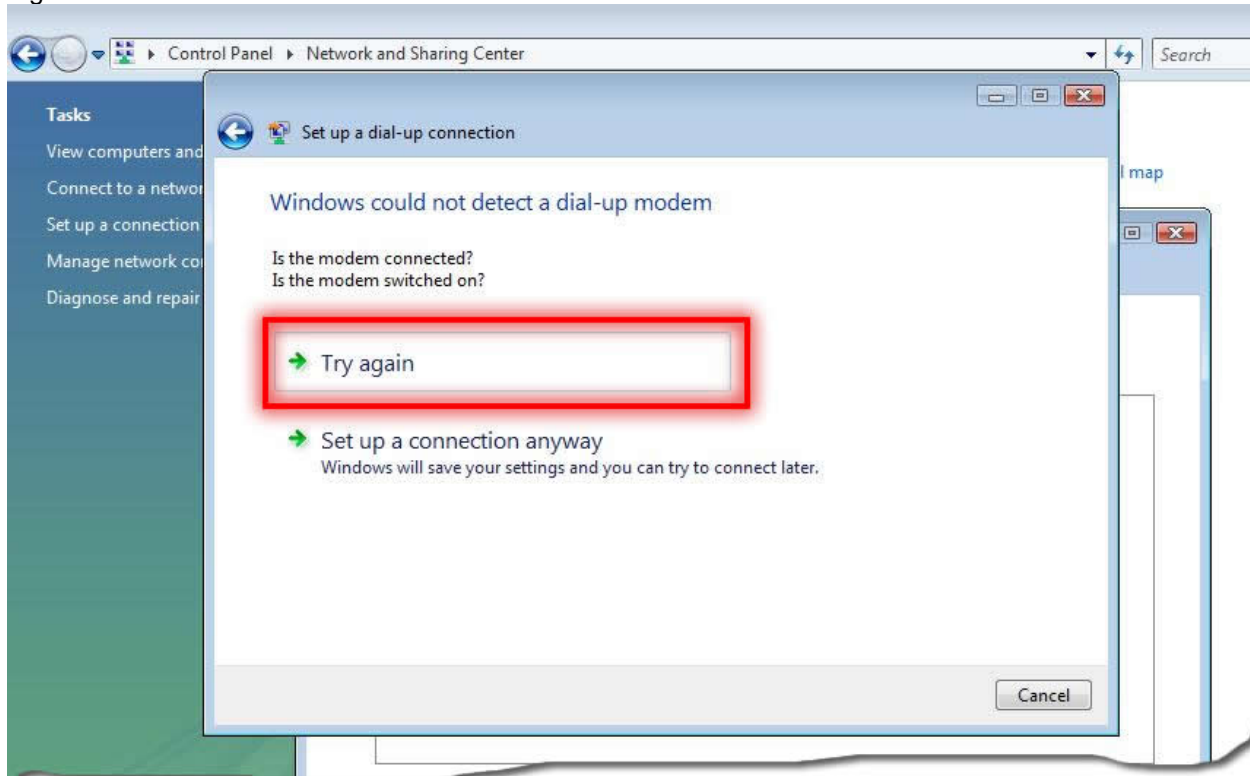
**Step 5:** Select “Setup a dial-up connection”, shown in Figure 3. Select “Next” at the bottom.

Figure 3



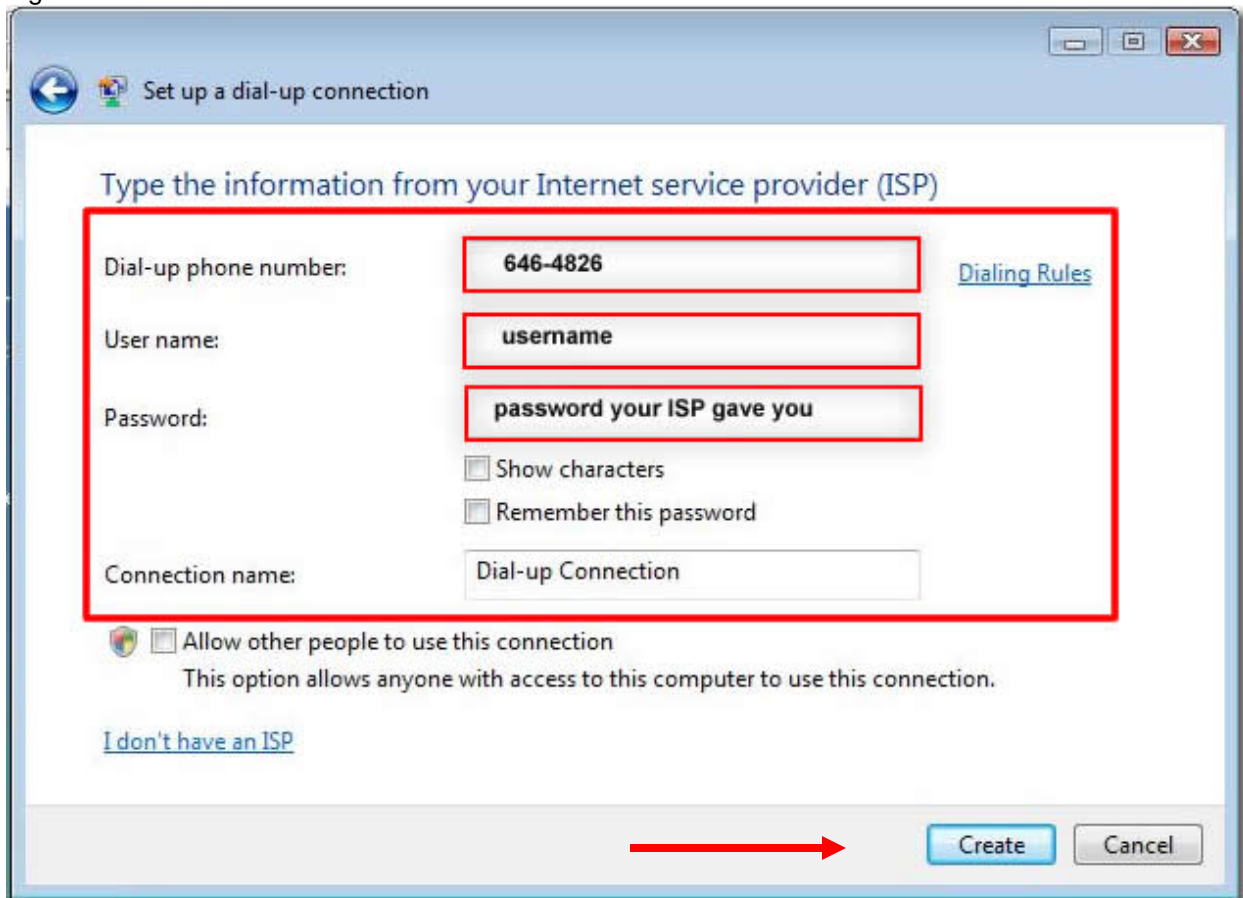
**Step 6:** If the message appears “Windows could not detect a dial-up modem”, verify your dial-up modem is connected or switched on. Then select “Try Again” shown in Figure 4.

Figure 4



**Step 7:** Type in your username and password (all lowercase) provided by GTA Spyder DSL shown in Figure 5. Click Create.

Figure 5



**Step 8:** The connection to the Internet is ready to use shown in Figure 6.

Figure 6

