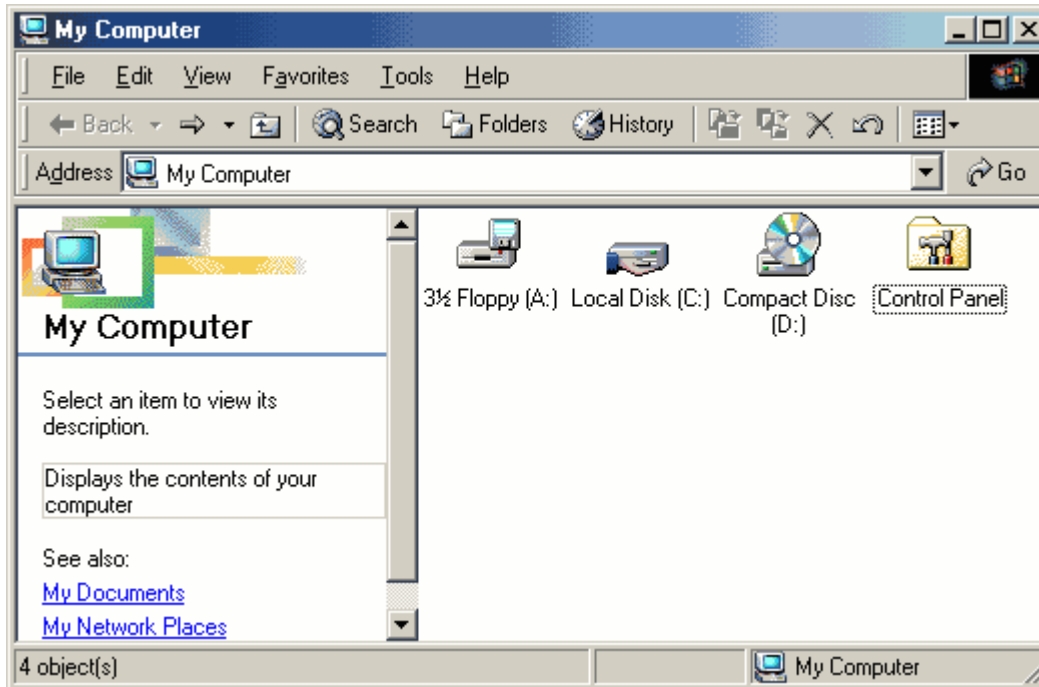
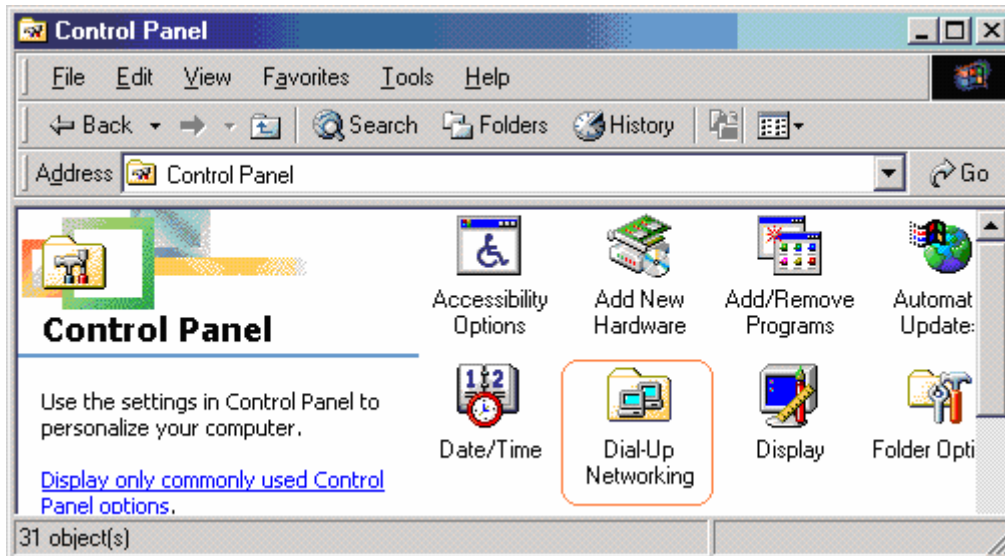


Windows ME Dial-Up Configuration

Step 1: On your desktop, double click the My Computer Icon. Then Double Click the Control Panel icon



Step 2: Double-Click the Dial-Up Networking icon

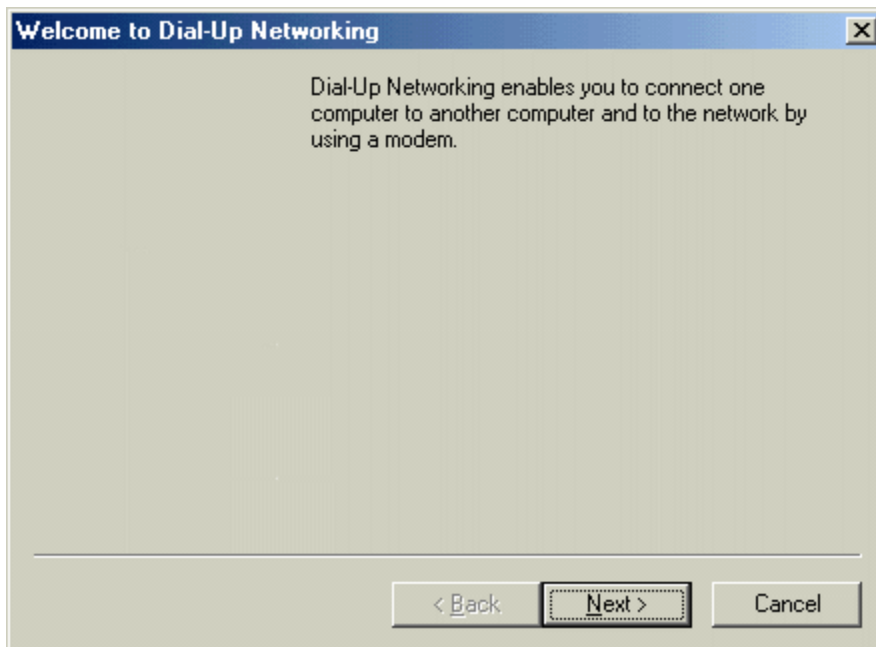


Windows ME Dial-Up Configuration

Step 3: Double-Click the Make New Connection icon.



Step 4: Click the Next button

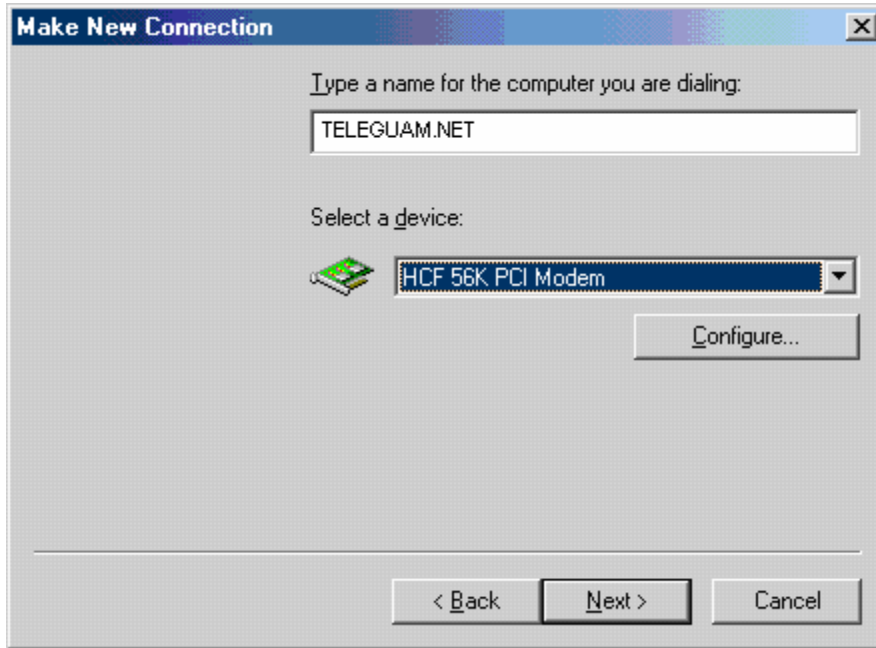


Windows ME Dial-Up Configuration

Step 5: Type in a name for the internet connection (i.e. TELEGUAM.NET)

Step 6: Then select your modem name from the drop down menu

Step 7: Click the Next button



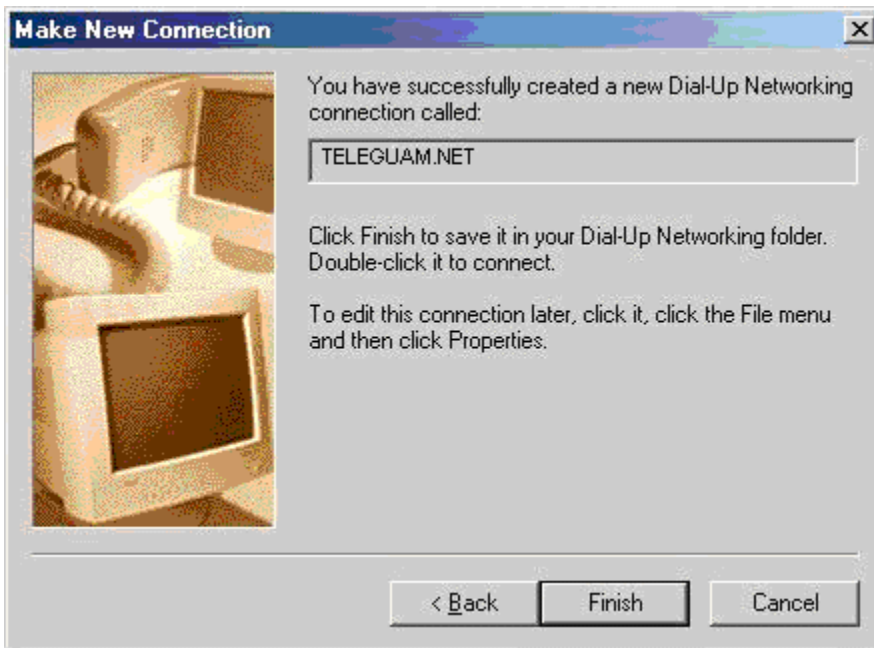
Step 8: Type the GTA Internet dialup access number

Step 9: Click the Next button



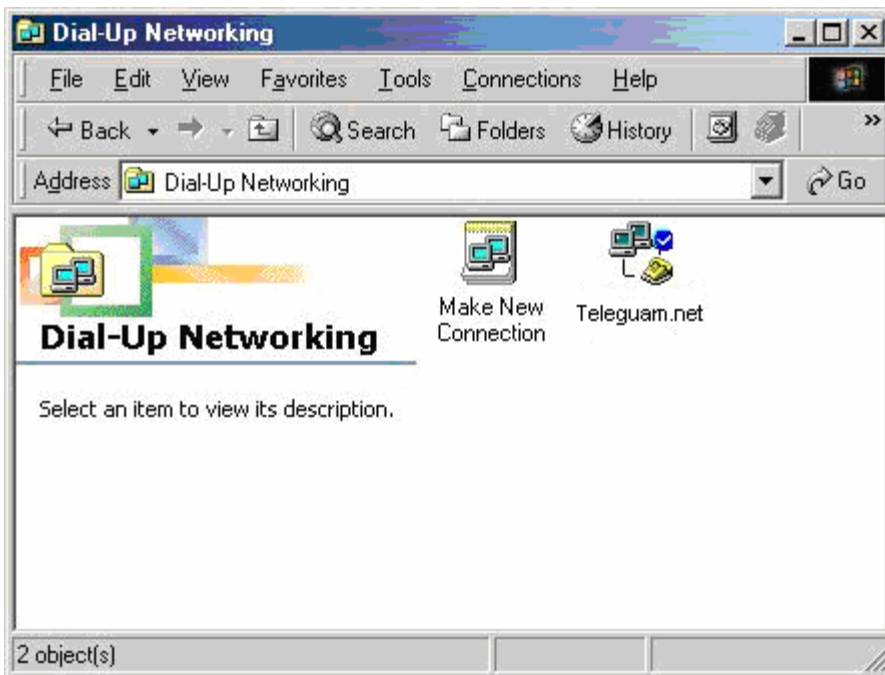
Windows ME Dial-Up Configuration

Step 10: You have now created your Dial-Up Networking connection. Click the Finish button

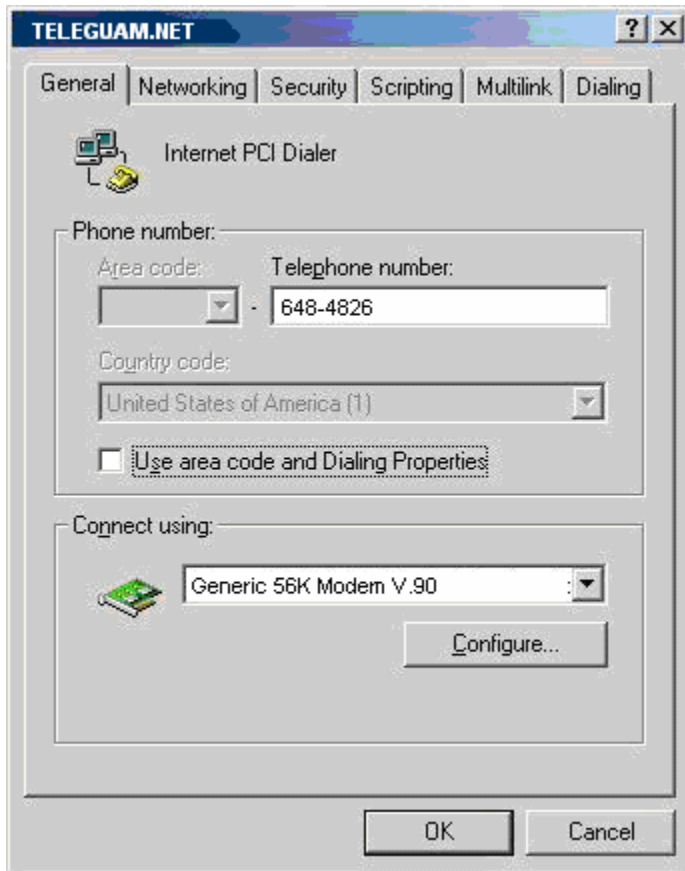


Step 11: To create a shortcut on your desktop, right click on the TELEGUAM.NET icon and click Create Shortcut. Now, in the Dial-Up Networking window, double click on the TELEGUAM.NET icon to connect to the internet

Step 12: Again, right click on the TELEGUAM.NET icon and click Properties.



Step 13: uncheck "Dial using the area code and country code". Click OK.



Step 14: Click on the Networking tab.

Step 15: Check Enable software compression.

Step 16: Uncheck NetBEUI.

Step 17: Uncheck IPX/SPX Compatible.

Step 18: Check TCP/IP.

Step 19: Click on OK.