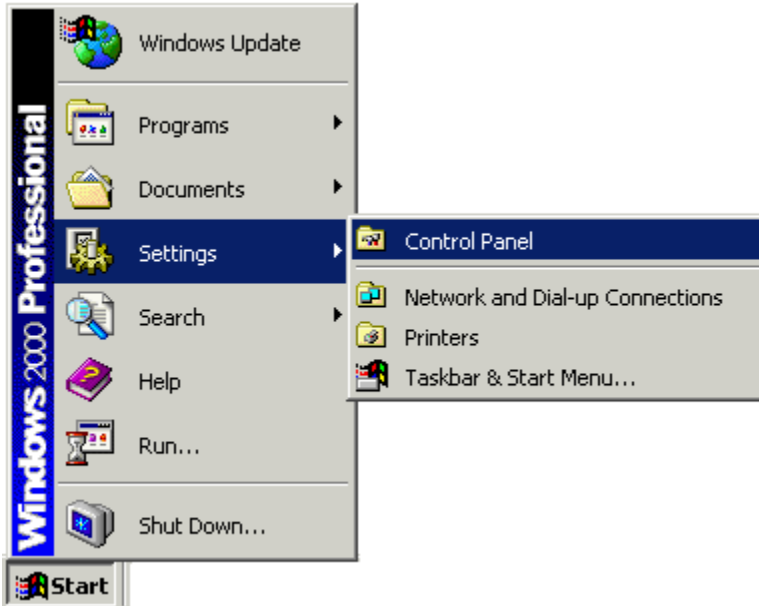


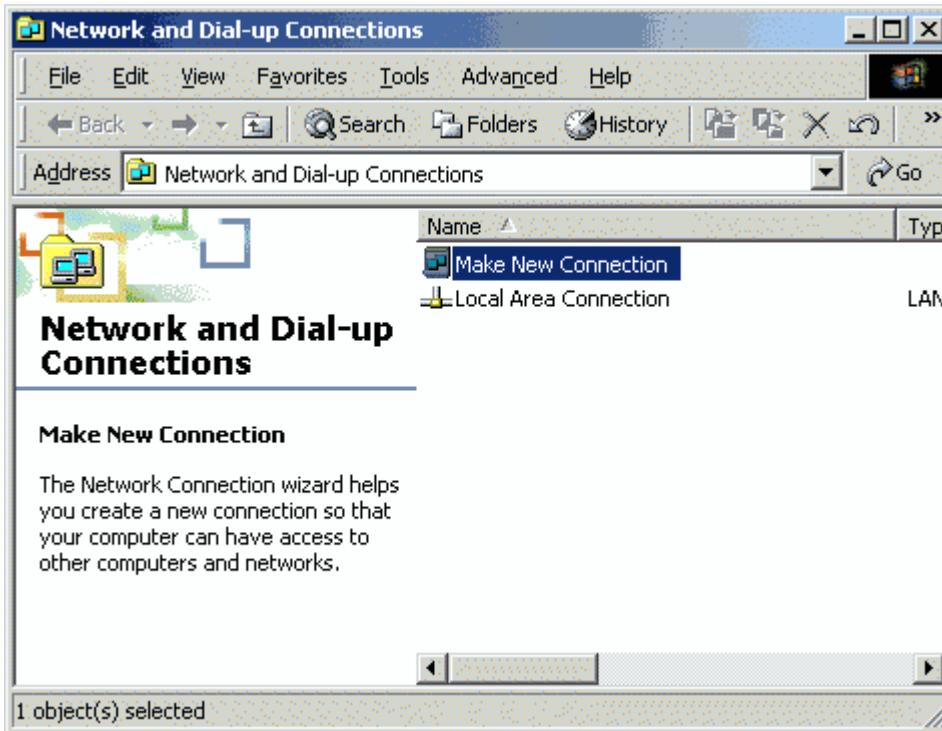
Step 1: Click Start, click Settings, then choose Control Panel



Step 2: Double-Click the Network and Dial-up Connections icon



Step 3: Double-Click the Make New Connection icon.

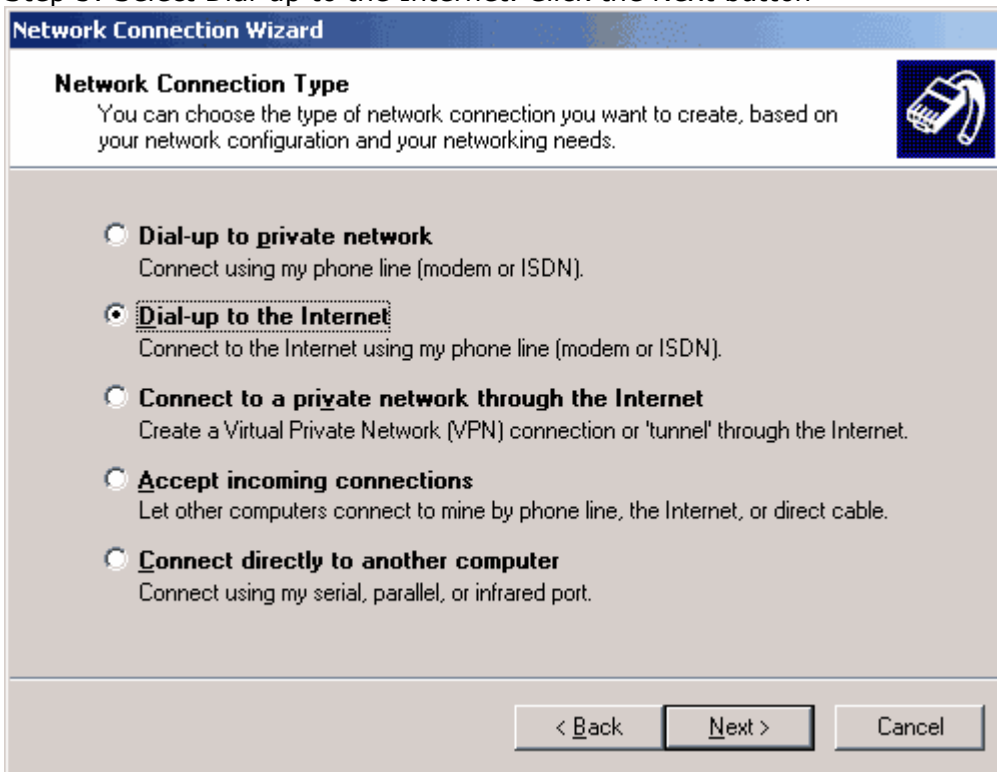


Step 4: This will then start the Network Connection Wizard. Click the Next button

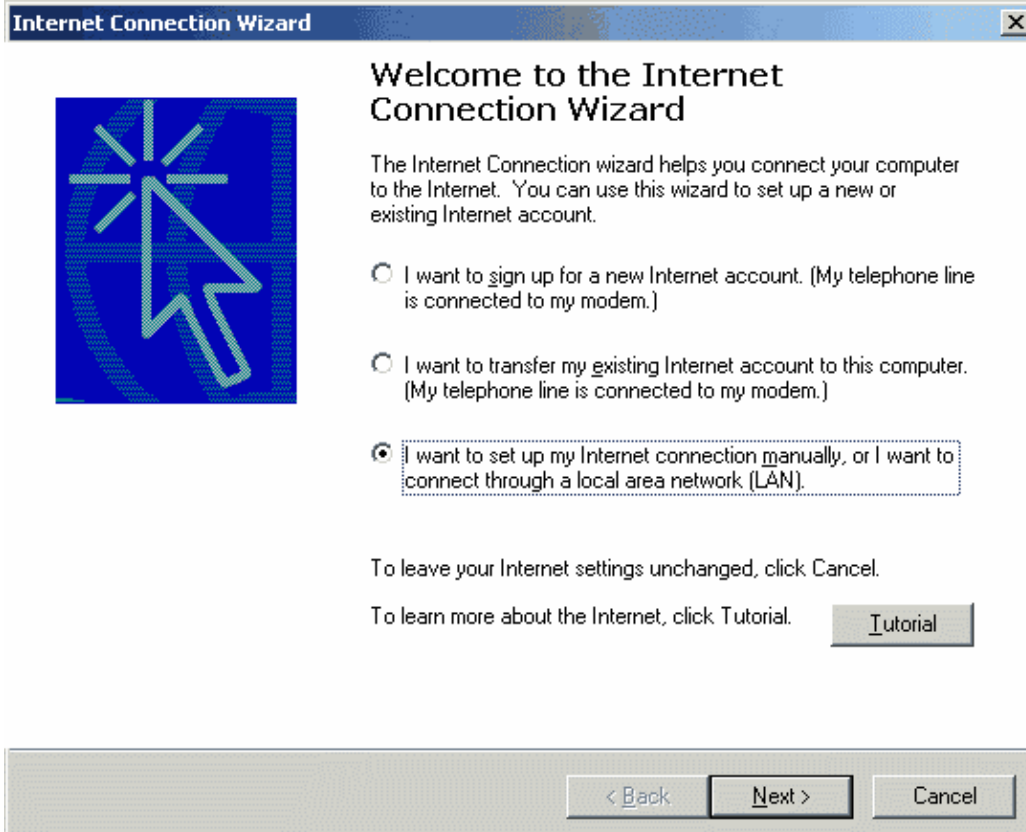


Windows 2000 Dial-Up Configuration

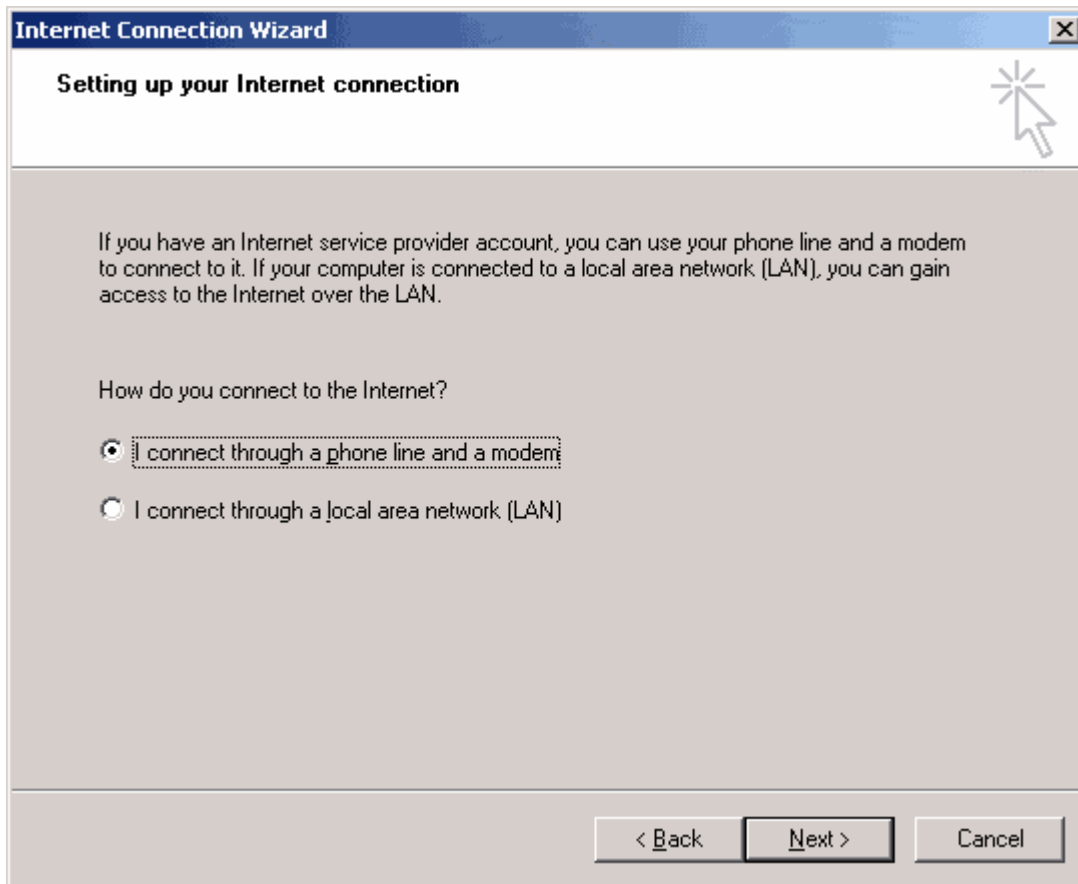
Step 5: Select Dial-up to the Internet. Click the Next button



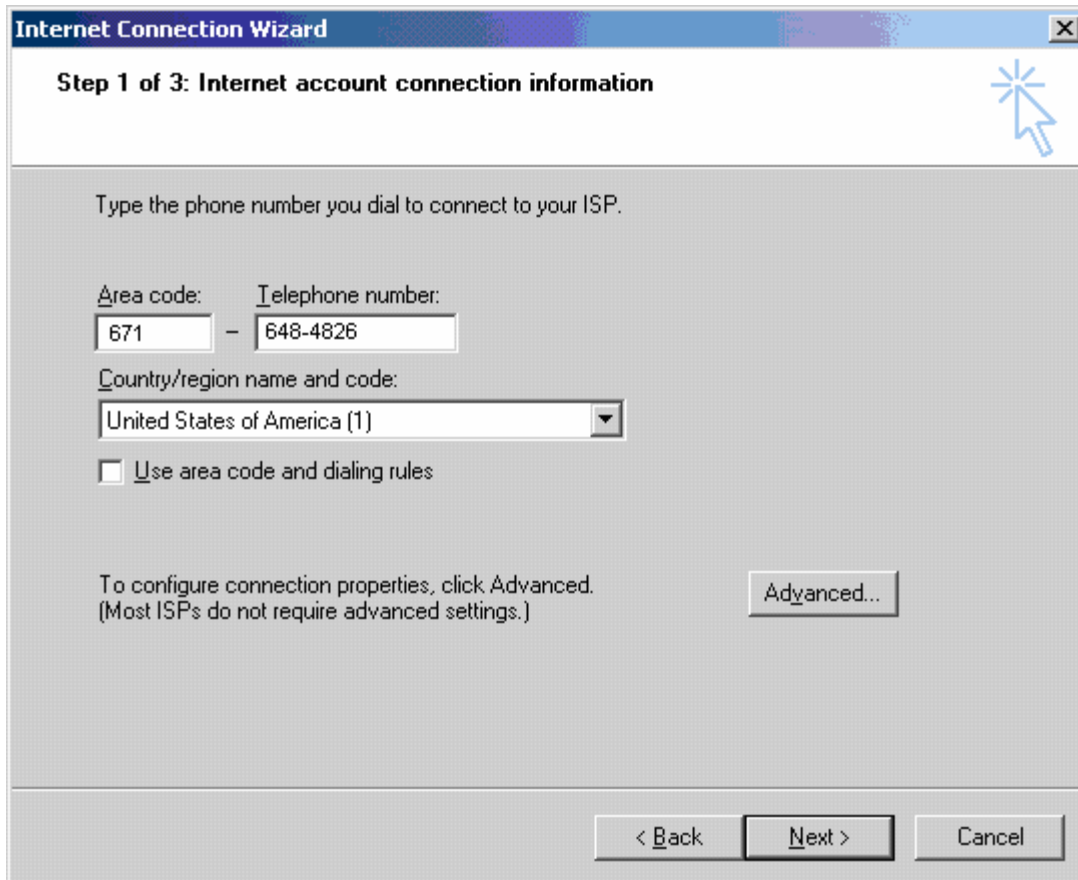
Step 6: Select the manual set-up option as seen below. Click the Next button



Step 7: Make sure that I connect through a phone line and a modem is selected as seen below. Click the Next button.



Step 8: In the Area code and Telephone number boxes, type 671 & the GTA Internet dialup access number, then uncheck "Dial using the area code and country code". Click Next.



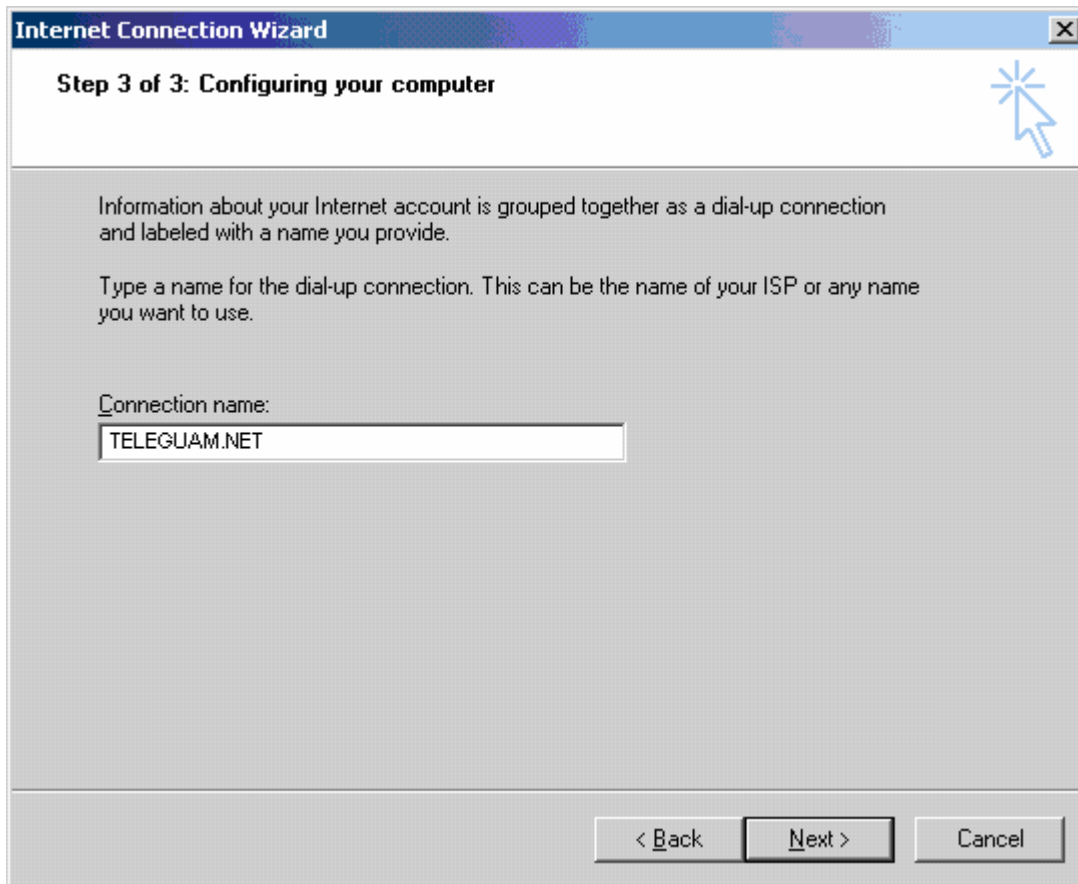
The screenshot shows the 'Internet Connection Wizard' window, titled 'Step 1 of 3: Internet account connection information'. The window has a blue header bar with the title and a close button. Below the header, there is a blue mouse cursor icon. The main content area is light gray and contains the following elements:

- Instruction: 'Type the phone number you dial to connect to your ISP.'
- Form fields: 'Area code:' with a text box containing '671', and 'Telephone number:' with a text box containing '648-4826'. A hyphen '-' is positioned between the two boxes.
- Dropdown menu: 'Country/region name and code:' with a dropdown menu showing 'United States of America (1)'.
- Checkbox: An unchecked checkbox labeled 'Use area code and dialing rules'.
- Text: 'To configure connection properties, click Advanced. (Most ISPs do not require advanced settings.)' with an 'Advanced...' button to its right.
- Navigation buttons: '< Back', 'Next >', and 'Cancel' buttons at the bottom.

Step 9: In the User name field, enter in your dialup username (same as your primary email address). In the Password field, enter in the password that you selected, then click Next.

The screenshot shows a Windows XP-style dialog box titled "Internet Connection Wizard" with a close button (X) in the top right corner. The main title bar is blue. Below the title bar, the text "Step 2 of 3: Internet account logon information" is displayed in a bold font. To the right of this text is a blue mouse cursor icon pointing at a starburst symbol. Below the title bar, there is a block of instructional text: "Type the user name and password you use to log on to your ISP. Your user name may also be referred to as your Member ID or User ID. If you do not know this information, contact your ISP." Below this text are two input fields. The first is labeled "User name:" and contains the text "username". The second is labeled "Password:" and contains five asterisks "*****". At the bottom of the dialog box, there are three buttons: "< Back", "Next >", and "Cancel".

Step 10: For the Connection name, type in TELEGUAM.NET, or another name you would like to identify this connection as. Click the Next button



Step 11: Select No. Click the Next button



Step 12: Click the Finish button

Step 13: In the Network and Dial-up connections window, to create a shortcut on your desktop, right click on the TELEGUAM.NET icon and click Create Shortcut

Step 14: In the Network and Dial-up connections window, double click the TELEGUAM.NET icon.

You are now ready to connect to the internet