

Subscription Video On Demand

Subscription Video On Demand from Guam Digital TV

GUdTV is excited to introduce SVOD (Subscription Video On Demand). GUdTV SVOD service offers you a library of programs to any of the Premium Channel or Subscription On Demand channels. Pricing for these subscription channels varies by package.

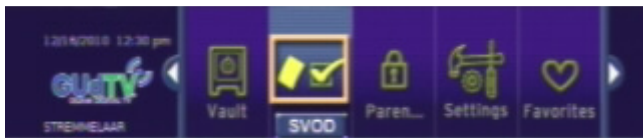
When you subscribe to a premium channel (HBO, Cinemax, Showtime, Starz!/Encore) you will get that premium channel's on demand programming FREE! Enjoy shows at your convenience with hundreds of hours of content to choose from each month, including blockbusters, original movies, series and events. Every premium on demand program comes with full DVD functionality with just your remote control. With new titles added every week, there is always something to watch.

Where to find it

Go to **SVOD** (press the **Menu** button on the remote control) and use the **Arrow** buttons to navigate to content under the SVOD category you are interested in.

How to subscribe

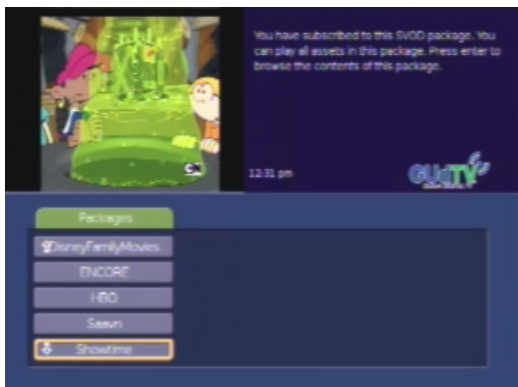
You have to subscribe to a given service to view its content. Premium SVOD is free, if you subscribe to the corresponding premium channel. Subscription On Demand from Disney Family Movies or Saavn can be ordered through your remote and is an additional monthly fee.

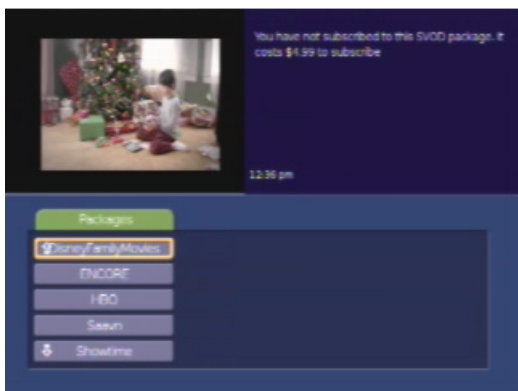


View SVOD

In order to access SVOD programs, you must be subscribed to the SVOD package. Once subscribed, you can play all titles in the package.

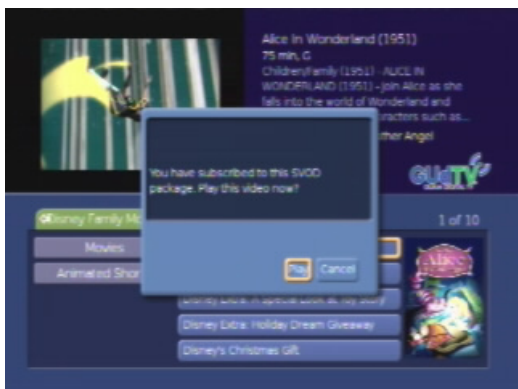
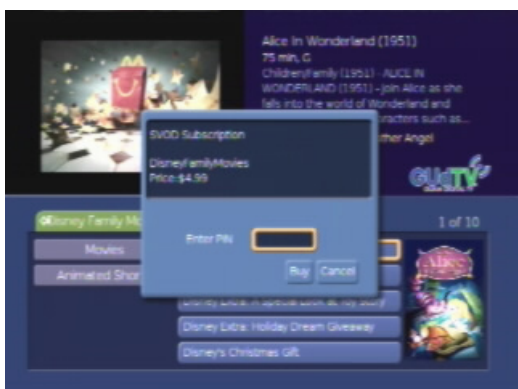
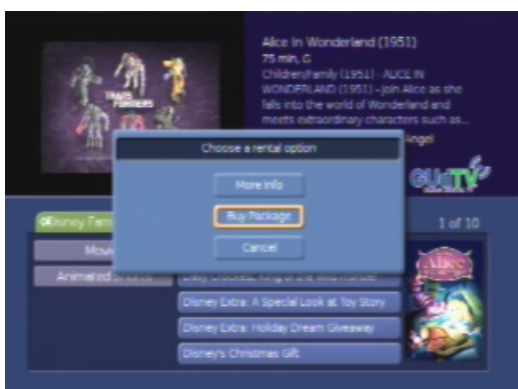
1. Press the **MENU** button (*the Main Menu Bar displays*) and use the **ARROW** buttons to highlight the **SVOD** icon and press **OK** (*Displays SVOD Categories*).
2. Use the **ARROW** buttons on your remote to view the SVOD packages by provider.
3. Choose **HBO, Cinemax, Showtime, Starz, Disney Family Movies** or **Saavn**.
4. Once you have chosen a premium content provider, you can select the type of content you wish to view such as series, sports, movies, specials, etc.
5. Determine which title you want to view. Select the option, **Play from Start** and Press **OK**. Your selected title will start to play.
6. Select the option, **Rental Info** to find out how long the title will be available for viewing and the ratings.
7. Use the **Fast-forward, Rewind, Pause**, and **Play** buttons to control your viewing. To end your viewing, press the **Stop** button.

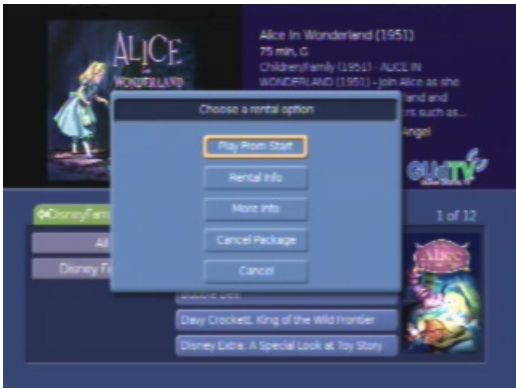




To subscribe to additional SVOD packages

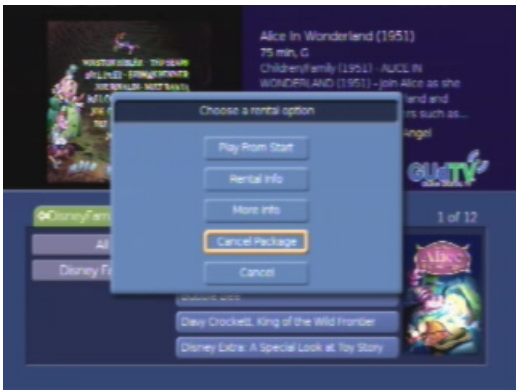
1. Press the **MENU** button (*the Main Menu Bar displays*) and use the **ARROW** buttons to highlight the **SVOD** icon and press **OK** (*Displays SVOD Categories*).
2. Use the **ARROW** buttons on your remote to view the SVOD packages by provider.
3. Choose **Disney Family Movies** or **Saavn** (monthly subscription required)
4. Once you have chosen a premium content provider, select the option, **Buy Package**.
 1. If you do not want to subscribe to the package, select the option, **Cancel**. This will return you to the list of SVOD programs.
 5. When prompted, enter your **PIN** and press **OK**.
 6. A message will display confirming that you have subscribed to the SVOD package. Choose **Play** to watch your selection.
 7. Your selection is now active for your viewing pleasure.
 8. Use the **Fast-forward**, **Rewind**, **Pause**, and **Play** buttons to control your viewing. To end your viewing, press the **Stop** button.





Resume or Restart an SVOD Selection

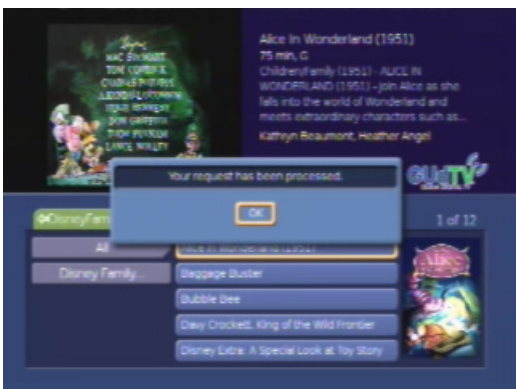
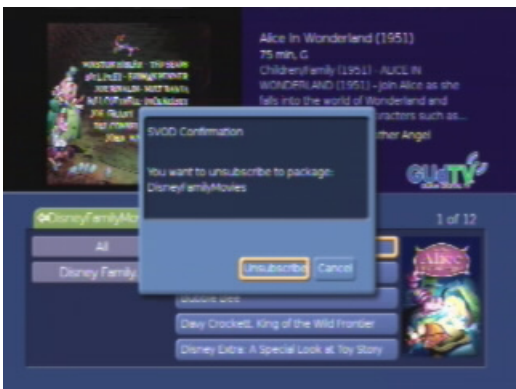
1. Press the **MENU** button (*the Main Menu Bar displays*) and use the **ARROW** buttons to highlight the **SVOD** icon and press **OK** (*Displays SVOD Categories*).
2. Use the **ARROW** buttons on your remote to select the SVOD category you want to return to and press **OK**.
3. Select the option, **Play from Last** to resume watching your selection or select the option, **Play From Start** to restart your selection.



How to cancel an SVOD package

You can cancel your subscription to SVOD packages via your remote control. This feature only applies to SVOD packages with a monthly subscription required (i.e. Disney Family Movies and Saavn).

2. Press the **MENU** button (*the Main Menu Bar displays*) and use the **ARROW** buttons to highlight the **SVOD** icon and press **OK** (*Displays SVOD Categories*).
3. Use the **ARROW** buttons on your remote to select the SVOD category you want to cancel.
4. Use the **Arrow** buttons to select the option, **Cancel Package** and press **OK**.
5. When the SVOD Confirmation screen appears, it will ask you if you want to unsubscribe to package: Disney Family Movies (example)
6. To proceed, select the option, **Unsubscribe** and press **OK**. A pop up will display to confirm that your request has been processed.
7. If you do not want to cancel your subscription, select the option, **Cancel**. This will return you to the list of SVOD programs.



Subscription Video On Demand Frequently Asked Questions

1. What is Subscription Video On Demand?

Subscription Video On Demand, or SVOD, lets you order what you want, when you want, without paying for each title you view. Instead, you pay a low monthly fee that gives you unlimited access to any of the featured subscription VOD services, such as Disney Family Movies and Saavn.

And, if you subscribe to a premium movie channel (i.e. Showtime) that channel's On Demand service is included at no additional fee.

2. What's the difference between GUDTV Video On Demand and Subscription Video On Demand?

Subscription Video On Demand uses the same technology as Video On Demand, but is a monthly subscription service. This means that with Subscription Video On Demand you do not pay each time you view a program, but pay one flat monthly fee to watch movies and shows as often as you wish.

3. What are the requirements to access subscription video on demand programming?

To access subscription video on demand programming from premium channels like HBO and Showtime, you must first subscribe to that premium package before watching the content.

To subscribe to SVOD programming from Disney Family Movies and Saavn, simply follow the onscreen prompts to subscribe for a nominal monthly fee.

4. How do I find Subscription Video On Demand?

Using your remote control, access Subscription Video On Demand Packages in the Main Menu Bar. Select "SVOD".

5. How much does Subscription Video On Demand cost?

Disney Family Movies and Saavn are Subscription Video packages. Disney Family Movies is \$4.99 per month and Saavn is \$7.99 per month. A 30-day billing cycle subscription is required. If you subscribe to Premium Movie channels (i.e. Showtime) you can access Showtime On Demand for free!

6. What is Disney Family Movies?

Disney Family Movies is an On Demand subscription package showcasing family-friendly programming pulled from Disney's vault of classic and contemporary films and animated shorts. The cost per month is \$4.99.

7. How often can I watch the movies in my Disney Family Movies package?

When you subscribe to Disney Family Movies, you can watch all the movies within the package anytime you want, as often as you want for one low price of just \$4.99 per month.

8. What kinds of movies are offered in the Disney Family Movies package?

Many of the favorite classic Disney movies will be available each month; movies will not be brand new or recently released movies. The selections will be a mix of movie titles, classic animated shorts, and other Disney programming.

9. What is Saavn?

Saavn is a Subscription VOD network with exclusive rights to high quality Bollywood movies, music, TV shows, sports programming and live events from India. The cost per month is \$7.99.

10. How often can I watch the movies in my Saavn package?

When you subscribe to Saavn, you can watch all the movies within the package anytime you want, as often as you want for one low price of just \$7.99 per month.

11. How do I subscribe to Subscription Video packages?

You can subscribe to a SVOD package using your remote control. Monthly subscriptions will automatically renew and can be cancelled at anytime. After the service subscription has been ordered you can select the SVOD Category in the Main Menu Bar.

If you subscribe to a premium movie channel, you will automatically have access to that channel's SVOD programming.

12. How can a customer unsubscribe to an SVOD package?

To cancel a SVOD subscription, customers will be required to unsubscribe from the package using their remote control otherwise they will be billed automatically for the content, monthly.

13. Can the same program be seen on two different TV's in the house?

Yes.

14. Can I record a SVOD program on DVR?

No. Embedded copyright code prevents Video On Demand from recording to DVR.