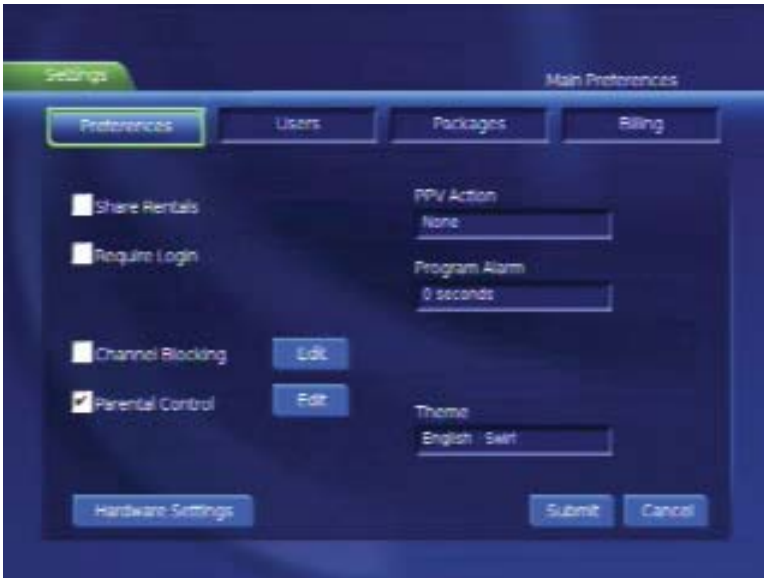


PARENTAL CONTROL



With Parental Controls, the primary user is in charge of the content your family watches. You can block by TV or movie ratings, as well as by content. You can even create multiple user profiles so that different users in your household have access to different content. When you block by rating, all higher ratings will also be blocked.

Setting up Parental Controls

1. Press . Use to select *Settings*. Press .
2. Enter your password and Press (the default password is 0).
4. Use the to navigate to *parental control* and select the check box by pressing to enable parental controls.
5. Use the arrows to select *Edit* and press .
6. Select yes if asked to save changes and press .

Note: Changing Parental Controls settings will affect ALL of your TVs. The Settings option will only appear in the Main Menu Bar for the master account.

Block by TV or movie rating

1. Use the to navigate to *movie rating* or *TV rating* and press .
2. Use arrows to select the rating you wish to block and press .