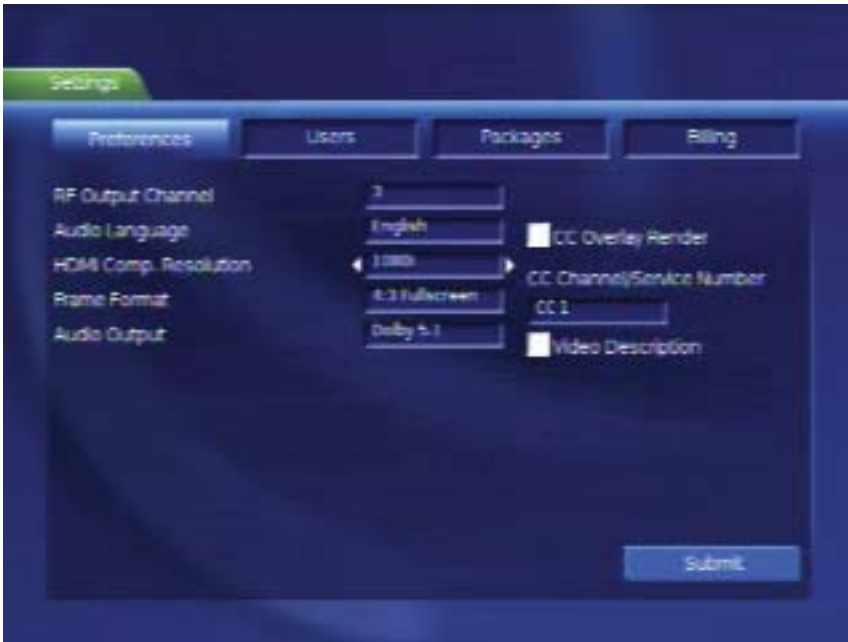


HARDWARE SETTINGS



You may be able to improve your viewing experience by adjusting the settings on your set top box. Your GTA installer will have already set these for you based on your system setup at the time of installation.

1. Press **MENU** and use the **<** **>** keys to select *Settings*. Press **OK**.
2. Enter your password and press **OK**. (the default password is 0).
3. Navigate to *hardware settings* and press **OK**.

Note: Changing audio language is not currently enabled.

4. Navigate to *HDMI comp resolution* and press **OK**.
5. Use the **<** **>** arrows to choose the highest resolution your TV will allow. If you have an HD capable TV, this would be *1080i*. Refer to your TV user manual for more information.
6. Navigate to *frame format* and press **OK**.
7. Use **<** **>** arrows to select *4:3 Letterbox*, *4:3 Fullscreen* or *16:9 Fullscreen*.
8. Turn on *closed captioning* by navigating to the check box next to *CC overlay Render*.
9. Use **^** **v** arrows to select *submit* and press **OK**.

Note: Do not change the *RF output* or *CC channel/service* number settings as they have been set during installation.

High Definition TV

High Definition (HD) is an entirely new way to watch television. Experience a true widescreen picture that's up to 6x better than regular cable TV. And with Dolby 5.1 sound, HD is a treat for your ears as well. To subscribe to HD service, please call 644 – 4GTA (4482).

When using the Interactive Program Guide, you'll see that HD programs are identified by an HD icon before the program title.